



# ATyS

Motorised and automatic changeover switches from 125 to 3200 A



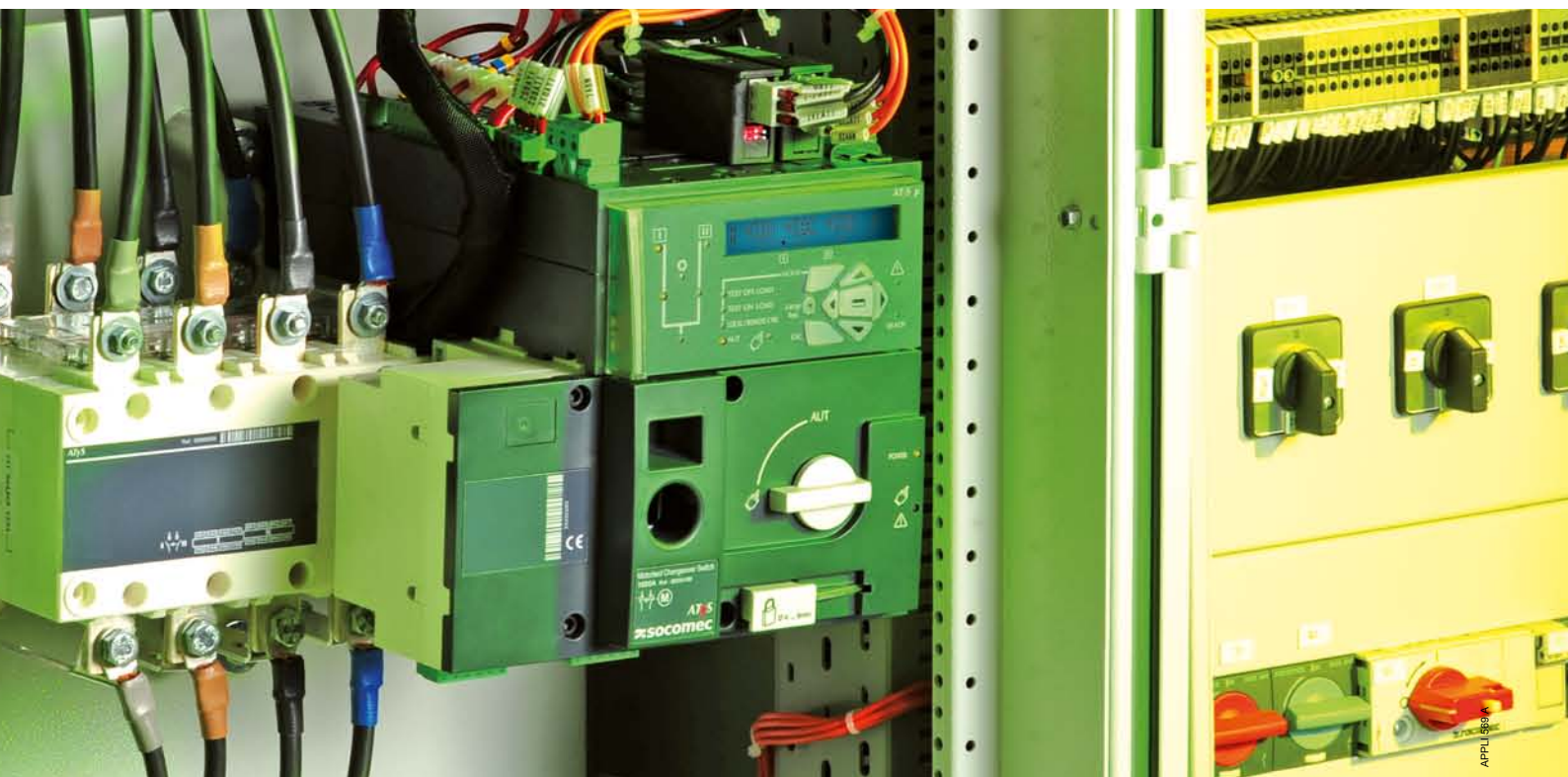
your energy  
our expertise



**socomec**  
Innovative Power Solutions

# A totally safe transfer, whatever the application

The design of the products in the ATYS family, based on proven load break switch technology, guarantees both the continuity of the power supply and the safety of operators. Its stable positions allow energy consumption to be minimised whilst ensuring maximum immunity to electrical network disturbances, making this a truly robust and reliable solution.



## Ensures availability of the electrical power supply under all circumstances

The functions and design of the ATYS product range all work towards one key objective: ensuring the supply of loads downstream, via **rapid transfer** from one source to another. These products have three operating modes, which increase the ability to select the most reliable source **under all circumstances**.

The products only require a power supply when changing position, which increases their reliability and service life.

## Simplicity ensures safety

Thanks to their on-load switching capacity, coupled with their Auto and Manual operating modes, the ATYS **are simple to use** and **100% secure**. The selection of the power supply source to the load can be achieved in three different ways:

- using the front operation handle (Manual mode),
- remotely, using the input for position control commands (Auto mode),
- automatically, depending on the availability of sources (Auto mode).

To ensure technical interventions downstream of the product are as secure as possible, ATYS have a **high-performance padlocking function** which is an efficient addition to the breaking functions.

To find out more...

Visit our website:

[www.socomec.com/en/changeover](http://www.socomec.com/en/changeover)

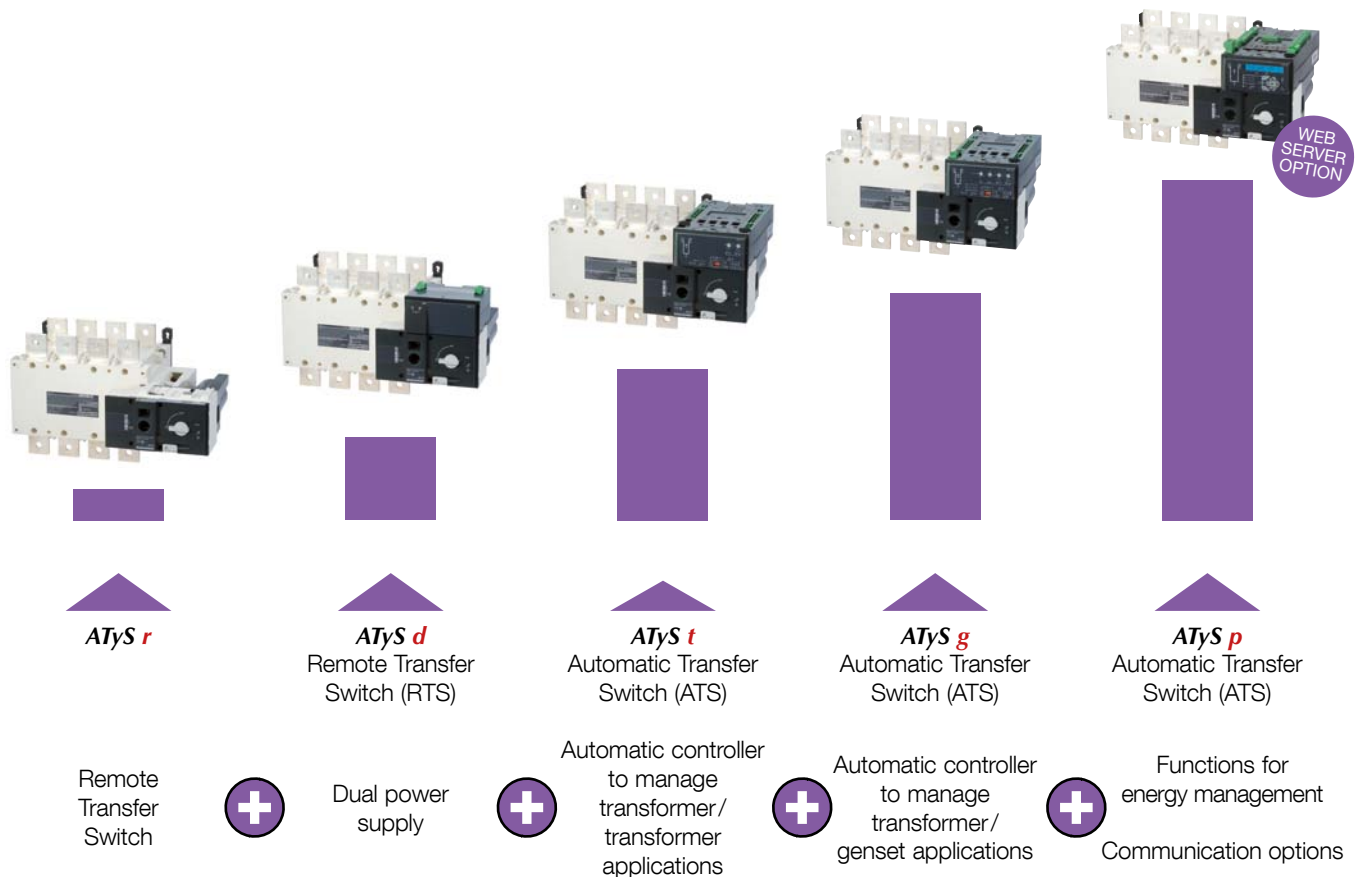


OPCODE02 B GB

# ATyS family

A **complete range** of changeover switches, from 125 to 3200 A, adapted to all your applications

Five product versions are available, ensuring a solution suited to your application.



## Automatic version (ATS) or motorised version (RTS)?



The ATyS t, ATyS g and ATyS p (ATS) versions differ from the ATyS and ATyS d in that they integrate an automatic controller.

This means that **the products themselves monitor the availability of sources, start the generators if necessary and automatically switch** to the available source.

Conversely, ATyS and ATyS d (RTS), require **an external controller** to provide them with switching commands.

# Benefits of the ATyS range



## Plug and play solution

### Integrated auto-configuration

As standard, all automatic versions have the auto-configuration function which enables **automatic setting of the nominal voltages and frequencies** for the network. Simply cable the product, which will then measure the values and record them.

### Quick installation

All ATYS products are factory assembled and require minimum cabling, thereby simplifying the installation and reducing the amount of time required to be operational.

For ATYS t and ATYS g, configuration adjustment is achieved via potentiometers, **requiring only a screwdriver and a few minutes.**



## Manual emergency control

In the event of an emergency, it can be controlled **quickly, easily and safely** using an emergency handle. This handle is very easy to fit and no motorised or automatic transfer can take place when the handle is in place.



## Improved performance

### According to IEC 60947-6-1:

- AC 33-B up to 1250 A
- AC 32-B up to 2000 A
- AC 31-B up to 3200 A



## Specific genset functions



ATYS g and ATYS p can be utilised for switching between transformer and generator power supply sources. They have a genset run command and integrate **on load and off load test** functions. These functions ensure there is a good connection between the source changeover switch and the generator, and that these are both operating correctly.

The ATYS p also allows **scheduled starts** to be programmed for these different tests.



## Continuous information

### on product availability

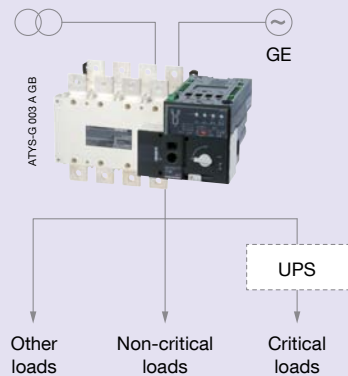
Products in the ATYS range are equipped with a Watchdog relay which **constantly monitors** your product, thereby securing your installation.

This relay informs you of the capacity of your product to switch correctly following an electrical or automatic order.



## Robust products

All ATYS product versions are designed and tested in accordance with standard **IEC 60947-6-1**, the benchmark for changeover switches offering optimum design and operating features.



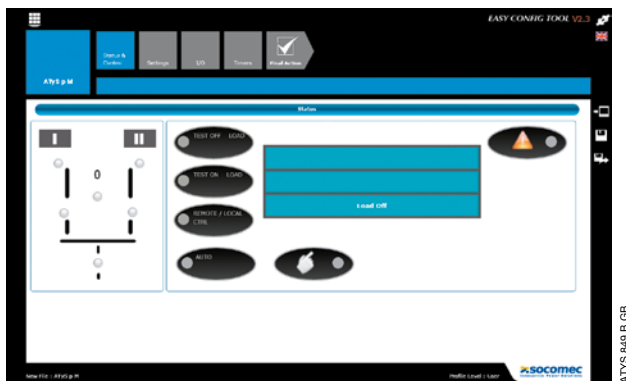
# The benefits of **ATyS p**

## Simple configuration software: Easyconfig

The **Easyconfig software** is ideal for reducing the time spent during complex configuration operations.

It allows the following parameters to be configured:

- type of application,
- voltage and frequency thresholds,
- timer values,
- inputs/outputs...



ATyS 640 B GB

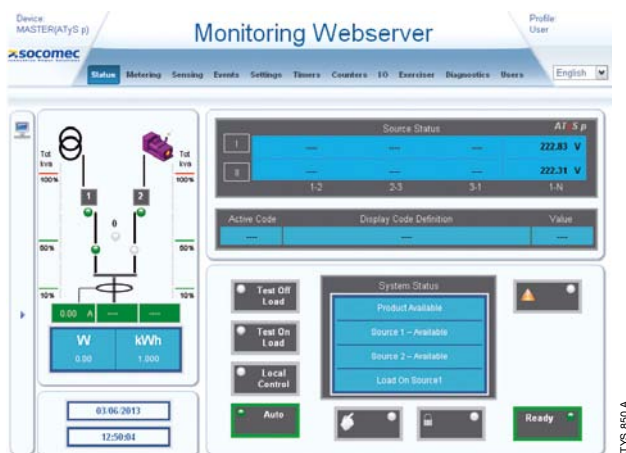
## Communication options which make the difference: Modbus, Ethernet and Webserver

Thanks to optional modules, ATyS p communicate using **Modbus** and **Ethernet** protocols.

The Ethernet communication module also integrates the **Webserver** function, allowing the ATyS p to be accessed via a web browser.

The Webserver function enables:

- product status display (product position and source status),
- the display of voltage measurements,
- the display of configured parameters,
- access to the event log.



ATyS 880 A

## Additions to the range

### ATyS S and ATyS d S Motorised changeover switches from 40 to 125 A

Specially developed for manufacturers of small generators, ATyS S and d S enable simultaneous breaking and switching between two power supply sources up to 125 A (< 90 kVA).



ATyS S 018 A

### ATyS M Modular changeover switches from 40 to 160 A

Four versions of ATyS M (remote-controlled and automatic) are available to meet the vast majority of your source switching application requirements.



ATyS PM 001 B

# Selection guide

Which type of transfer?

3 or 4 poles?

Which power supply?

Which application?

Supervision?

ATyS range: products fitted back-to-back

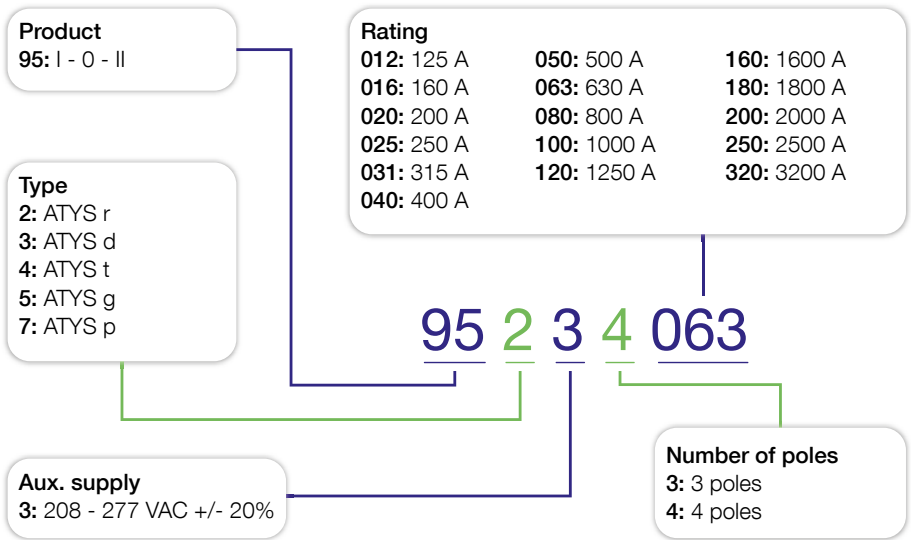
125 to 3200 A



	ATyS r	ATyS d	ATyS t	ATyS g	ATyS p
<b>Type of transfer</b>					
Emergency manual transfer via handle	•	•	•	•	•
Remote controlled transfer using dry contact piloting (RTSE)	•	•			
Automatic transfer (ATSE)			•	•	•
<b>Number of poles</b>					
3 P	•	•	•	•	•
4 P	•	•	•	•	•
<b>Supply type</b>					
230 VAC single power supply	•				
230 VAC dual power supply		•	•	•	•
<b>Connection of remote control interface</b>					
Remote display D10		•	•	•	
Remote control interface D20					•
<b>Automatic controller configuration</b>					
Configuration by potentiometers and dip switches			•	•	
Configuration by screen and keyboard					•
Auto-configuration of the voltage and frequency			•	•	•
<b>Application</b>					
Generator - Generator applications	• (1)	• (1)			
Network - Generator application	• (1)	• (1)		•	•
Network - Network application	• (1)	• (1)	•	•	•
<b>Automatic controller functionalities</b>					
Contact for product availability	•	•	•	•	•
Control of voltages and frequency			•	•	•
Control of phase rotation			•	•	•
Phase unbalance control					•
LED display of source availability		•	•	•	•
LED display of positions			•	•	•
On-screen display of meters and voltage/frequency measurements					•
On load and off load test				•	•
Load shedding					•
Display and measurement of power and energies (with CT option)					•
<b>Supervision (with optional module)</b>					
Scheduling of generator start-up					•
RS485 communication					•
Ethernet communication					•
Webserver via Ethernet module					•
Data log					•

(1) using an external controller.

## References for the ATYS range



## SOCOMEK, your best asset

SOCOMEK is an industrial group specialising in the availability, control and safety of low voltage electrical energy which meets the requirements of the industry and the service sector.

Disconnection, breaking, control... Since 1922 Socomec has gained a wealth of experience in these fields. The back-to-back manual changeover switch, designed and manufactured

by Socomec and now available in a compact motorised version, has become the world reference in powerswitching.

**ENERGY  
SPECIALIST**  
SINCE 1922



# Socomec worldwide

## IN INDIA

### CORPORATE OFFICE

B1, II Floor  
Thiru-Vi-Ka Industrial Estate  
Guindy, Chennai - 600 032  
Tel: +91 44 3921 5400 / 5423 / 5466  
Mob: +91 9711229993, +91 9790968731  
Fax: +91 44 39215450  
info.in@socomec.com

### MANUFACTURING FACILITY

756 Pace City II  
Sector 37  
Gurgaon - 122 001  
Haryana  
Tel: +91 124 4027 210 / 209 / 207  
Fax: +91 124 4562 738

### BRANCH OFFICES

#### BANGALORE

160, Arun Arch, 2<sup>nd</sup> Floor  
9<sup>th</sup> Cross, Indiranagar First Stage  
Bangalore - 560 038  
Tel: +91 80 41739101-03  
Mob: +91 9972578171

#### COCHIN

47/590, Mattathumkattil  
Narayanan Asan Road  
Ponnurruni, Vyttila  
Cochin - 682019  
Mob: +91 9745012322

#### COIMBATORE

12, 3<sup>rd</sup> Cross Street  
Lakshimpuram, Ganapathy  
Coimbatore - 641 006  
Mob: +91 9940137003, +91 9003032012

#### HYDERABAD

3<sup>rd</sup> Floor  
6-3-652/K/12, KAUTILYA Complex  
Somajiguda  
Hyderabad - 500 082  
Mob: +91 9959444277, +91 8886446123

#### KOLKATA

AK-257, Sector-2  
Salt Lake City, Kolkata - 700091  
Mob: +91 8697709096, +91 8697709095

#### MUMBAI

Office No.404, 4<sup>th</sup> Floor  
"C" Wing, Neelkanth Business Park  
Nr. Vidyavihar Station, Vidyavihar (W)  
Mumbai - 400 086  
Tel: +91 2225092793 / 94 / 95,  
+91 998705260, +91 9819924289

#### NEW DELHI

Plot No 100, 1<sup>st</sup> Floor  
Okhla Industrial Estate Phase III  
New Delhi - 110020  
Tel: +91 11 40884000  
Mob: +91 9958595941, +91 9953595413

#### PUNE

Plot No. 30, Wireless  
Co-operative Society  
Behind Convergys, Aundh  
Pune 411 007  
Telefax: +91 20 25881587  
Mob: +91 9987052604

### RESIDENT ENGINEERS

#### AHMEDABAD

+91 9727753931  
+91 9376639333

#### CHANDIGARH

+91 9023154784

#### TRIVANDRUM

+91 9020179364

## IN EUROPE

### BELGIUM

### FRANCE

### GERMANY

### ITALY

### NETHERLANDS

### POLAND

### PORTUGAL

### ROMANIA

### SLOVENIA

### SPAIN

### UNITED KINGDOM

### TURKEY

## IN ASIA PACIFIC

### AUSTRALIA

### CHINA

### SINGAPORE

### THAILAND

## IN MIDDLE EAST

### UNITED ARAB EMIRATES

## IN AMERICA

### USA, CANADA & MEXICO

## OTHER COUNTRIES

[www.socomec.co.in/worldwide](http://www.socomec.co.in/worldwide)

## HEAD OFFICE

### SOCOMECS GROUP

SAS SOCOMECS capital 10678740 €  
R.C.S. Strasbourg B 548 500 149  
B.P. 60010 - 1, rue de Westhouse  
F-67235 Benfeld Cedex - FRANCE  
Tel. +33 3 88 57 41 41  
Fax +33 3 88 74 08 00  
info.scp.isd@socomec.com

## YOUR DISTRIBUTOR

[www.socomec.co.in](http://www.socomec.co.in)

your energy  
our expertise



**socomec**  
Innovative Power Solutions