

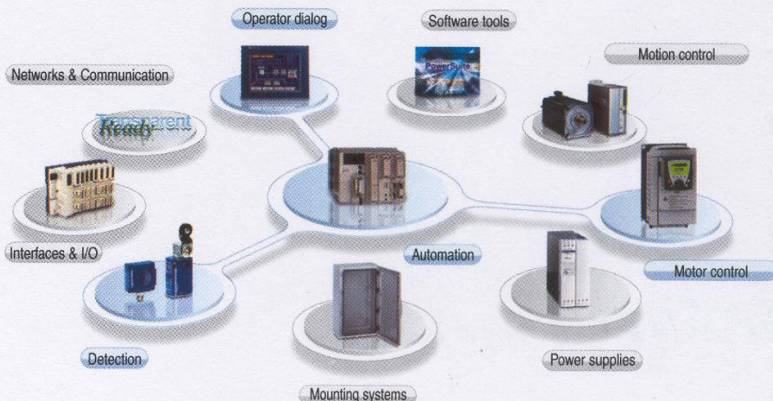
AUTHORISED DEALER

TECHMECH ELECTRICALS
1540 - A , BHAGIRATH PALACE , DELHI - 110006
TEL / FAX : 011 - 23865306 , 23873570

email : techmechelec@yahoo.com

The efficiency of Telemecanique branded *solutions*

Used in combination, Telemecanique products provide quality solutions, meeting all your **Automation and Control** applications requirements.



Simple machines

- Altistart 01 : 0.37 to 75 kW
- Altivar 11 : 0.18 to 2,2 kW
- Altivar 31 : 0.18 to 15 kW



Complex, high power machines

- Altivar 71 : 0.37 to 500 kW



Pumping and ventilation machines

- Altistart 48 : 4 to 1 200 kW
- Altivar 11...347 : 0.18 to 2.2 kW
- Altivar 21 : 0.75 to 30 kW
- Altivar 61 : 37 to 220 kW

A worldwide presence

Constantly available

- More than 5000 points of sale in 130 countries.
- You can be sure to find the range of products that are right for you and which complies fully with the standards in the country where they are used.

Technical assistance wherever you are

- Our technicians are at your disposal to assist you in finding the optimum solution for your particular needs.
- Schneider Electric provides you with all necessary technical assistance, throughout the world.



Simply Smart!

AUTHORISED DEALER

TECHMECH ELECTRICALS
1540 - A , BHAGIRATH PALACE , DELHI - 110006
TEL / FAX : 011 - 23865306 , 23873570

email : techmechelec@yahoo.com

Drives and Soft starters
Altivar / Altistart
The best *solution* for
each application...



Variable speed drives and soft starters
for asynchronous motor from 0.18 to 1200 kw

AUTHORISED DEALER
TECHMECH ELECTRICALS
1540 - A , BHAGIRATH PALACE
DELHI - 110006
TEL / FAX : 011 - 23865306 ,
23873570
email : techmechelec@yahoo.com

A brand of
Schneider
Electric

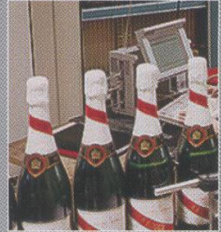
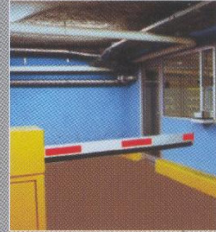


Telemecanique

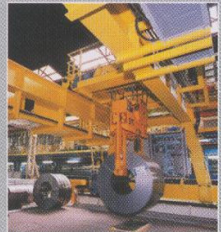
For *each application...*



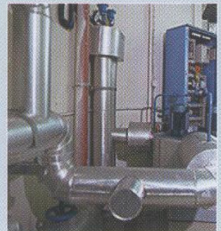
Simple, low power machines



Complex, high power machines



Pumping and ventilation machines



AUTHORISED DEALER
TECHMECH ELECTRICALS
1540 - A , BHAGIRATH PALACE
DELHI - 110006
TEL / FAX : 011 - 23865306 ,
23873570
email : techmechelec@yahoo.com

AUTHORISED DEALER
TECHMECH ELECTRICALS
1540 - A , BHAGIRATH PALACE
DELHI - 110006
TEL / FAX : 011 - 23865306 ,
23873570
email : techmechelec@yahoo.com

...a solution
in *variable speed*
and *soft starting*

>>> Compact



Drive
Altivar 11



Drive
Altivar 31



Soft starter
Altistart 01

>>> high performance



Drive
Altivar 71

>>> tailor-made



Drive
Altivar 21



Drive
Altivar 61



High performance
soft starter
Altistart 48

AUTHORISED DEALER
TECHMECH ELECTRICALS
1540 - A , BHAGIRATH PALACE
DELHI - 110006
TEL / FAX : 011 - 23865306 ,
23873570
email : techmechelec@yahoo.com

The *simplicity* of a complete offer

Smooth motor starters...likewise the solutions offered. Ready to use versions, the same software for the complete offer, choice of communication network... so many evolution and new items to aid your productivity.

Unique software : *Power Suite*

A single piece of software enables configuration of all the Altivar drives and Altistart soft starters in all simplicity.

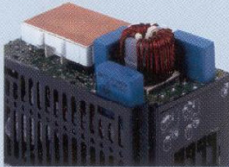
Customise your settings with the minimum of effort !

Power suite enables you to easily define your parameters, prepare, print out configuration, compare files, etc. Configurations can be saved, enabling you to very quickly recall them for any similar applications.



Integrated EMC standards

EMC filter

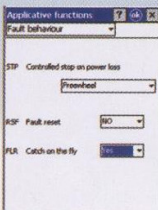
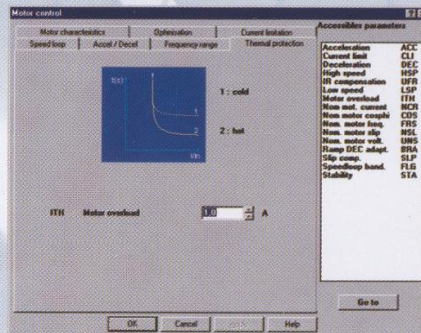


- Full EMC compliance and very low electromagnetic interference assured using models with integrated EMC filters

Ready to use versions



- Forget the costs and design times with the ready-assembled versions.



Setting-up and maintenance simplified

Graphical display of settings

AUTHORISED DEALER
TECHMECH ELECTRICALS
 1540 - A , BHAGIRATH PALACE
 DELHI - 110006
 TEL / FAX : 011 - 23865306 ,
 23873570
 email : techmechelec@yahoo.com

AUTHORISED DEALER
TECHMECH ELECTRICALS
1540 - A , BHAGIRATH PALACE
DELHI - 110006
TEL / FAX : 011 - 23865306 ,
23873570
email : techmechelec@yahoo.com

Total access

With a broad range of access to bus and communication networks, the Altivar variable speed drives and Alstarters soft starters easily integrate in all your architectures.

■ Integrated Modbus.

- FIPIO
- Modbus Plus
- Ethernet
- CANopen.
- AS-i.
- Unitelway.
- Profibus DP.
- Interbus S.
- DeviceNet.
- N2.
- Lonworks.



Using the Ethernet card and a simple Web browser, you can manage your installations from anywhere, at any time... with complete efficiency.



Transparent Factory™
 Web serving industrial process



Transparent Building™
 Web serving building management efficiency

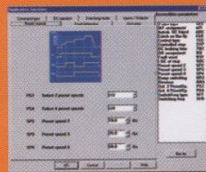
Transparent Ready®

With Ethernet,

Monitor your installations 24 hours a day!

From a remote location you benefit, in real time, of having precise information to simplify operation of your machines (thermal state of the motor, motor torque, active power in kw/h, etc.)

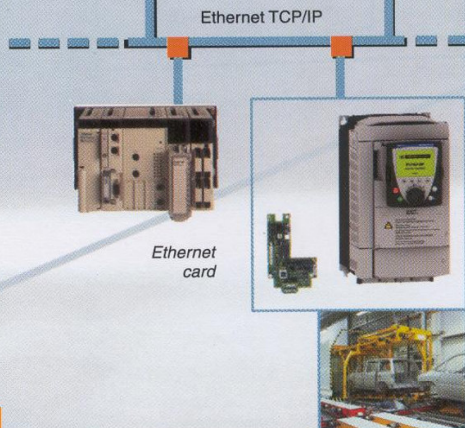
Current status, Diagnostics, Adjustment, using Power Suite



Remote PC Internet connection



Connected to the internal Ethernet network your PC remains in constant contact with your applications



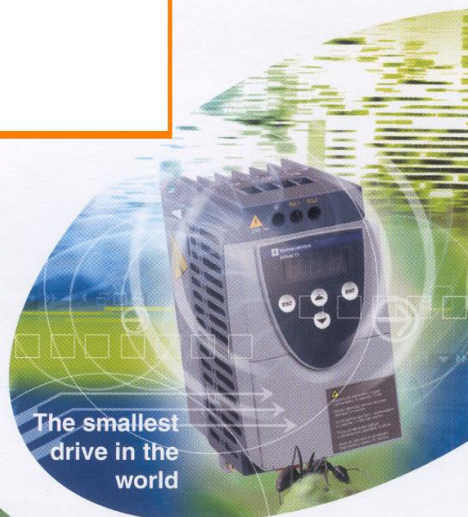
AUTHORISED DEALER
TECHMECH ELECTRICALS
1540 - A , BHAGIRATH PALACE
DELHI - 110006
TEL / FAX : 011 - 23865306 ,
23873570
email : techmechelec@yahoo.com

AUTHORISED DEALER
 TECHMECH ELECTRICALS
 1540 - A , BHAGIRATH PALACE
 DELHI - 110006
 TEL / FAX : 011 - 23865306 ,
 23873570
 email : techmechelec@yahoo.com

Drive Altivar 11

Real efficiency at a reduced size

The **Altivar 11** will make you forget mechanical and electromechanical solutions. Its flux vector control and numerous protective functions assure **performance and continuous service**. Ideal for domestic type applications, it integrates the specifications (EMC).



The smallest drive in the world

Applications from 0.18 to 2.2 KW

- Conveyors, garage doors, lift doors, automatic parking barriers, check-out counters, etc..



- Grinders, saws, drills, exercise equipment, scrolling displays, retractable hoods, dough mixers, etc.

Main characteristics

- Speed regulation by flux vector control.
- Speed range from 1 to 20.
- Protection even in severe environment from -10 to + 50°C
- Through wiring and connection using captive screws: simple replacement of electro-mechanical solutions.
- Compact, side by side mounting.
- DIN rail mounting possible.
- Integrated class B EMC filter or available as an option. **Very low leakage current of drive**, compatible with 30 mA differential circuit-breaker for assured protection of personnel.
- Baseplate mounted version available.

Altistart 01

Say goodbye to surges...



With the ATS 01, you smoothly start asynchronous motors in the best conditions for the motor, the machine being driven and the line supply.

Voltage ranges

- 230V single phase
- 230...690V 3-phase
- 50/60 HZ

Applications from 0.75 to 75 KW

- Conveyors,
- Fans, compressors, etc.
- Packaging, Textile machines

Voltage ranges

- 100..120 V / 200 .. 240 V single - phase (-15% + 10%)
- 200 - 230 V 3 - phase.
- 50/60 Hz

Altivar 11

for your applications...

Automatic parking barriers

- Excellent dynamics : Use of an advanced algorithmic vector motor control minimises cycle times.

Garage doors, lift doors, etc.

- Customisation of Open / Close cycles due to the assignment of several functions on the same logic input :
- different ramps.

- Silent operation due to high switching frequency.

Dough mixers, saws, etc.

- Perfect mastery of this motor drive application : no tripping in the event of torque surges.

Standards and certifications

CSA, EN 50178, EN 61800-3, EN 55011, EN 55022, class B et class A gr. 1 NOM 117, C-TICK



Standards and certifications

CSA, IEC 60947-4-2, UL, CE

Main characteristics

- Starting / deceleration time :
1 to 5 seconds or 1 to 25 seconds.
- Integrated bypass contactor.**
- Simple dialogue by 2 LEDs
- Ready-assembled, ready to use version available.

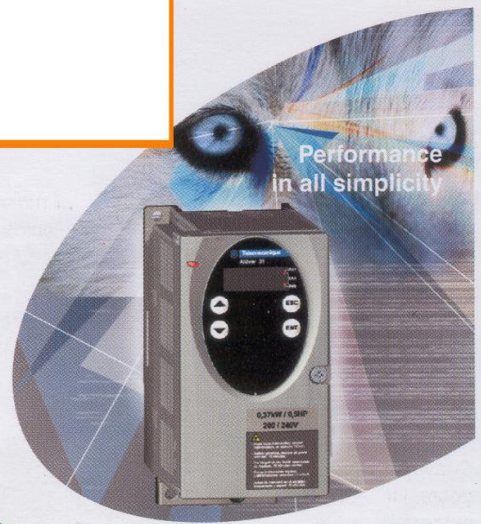
Drive Altivar 31

High performance instinctively

AUTHORISED DEALER
TECHMECH ELECTRICALS
 1540 - A , BHAGIRATH PALACE
 DELHI - 110006
 TEL / FAX : 011 - 23865306 ,
 23873570
 email : techmechelec@yahoo.com

Performance
 in all simplicity

With its numerous functionalities, wide range of hardware options, and communication options, the **Altivar 31** provides unmatched value for machine control applications from 0.18 Kw to 15Kw. The Altivar 31 continues strong tradition of **Performance, Flexibility, Open Access, Compactness** yet it is simple to use and rugged.



Applications from 0.37 to 15 KW

- Conveyors, packaging machines, mechanical handling, textile machines, blenders / mixers, special machines, centrifugal machines.
- Pumps, compressors, fans, etc.



Main characteristics

- Speed regulation by Flux vector control.
- Speed regulation from 1 to 50.
- 170 motor overtorque without adjustment
- -10 to 50°C without derating for standard heatsink product
- Compact side by side mounting, no derating up 50°C
- Heat sink, Customised (IP55), Kit versions available
- Integrated braking transistor, accessible dc bus
- Integrated Class A EMC Filter
- Positive and negative logic options on Logic Inputs, local remote control options
- Multiple assignments on same logic input
- 16 preset speeds, Brake logic, Traverse control, +/- speeds, Linear/S-ramps ramp switching, current limit switching
- **Integrated Modbus, CANopen**

Voltage ranges (+10% - 15%)

- 200 - 240V single phase
- 200 - 240V Three phase
- 380 - 500V Three phase
- 525 - 600V Three phase
- 50/60 Hz

Altivar 31

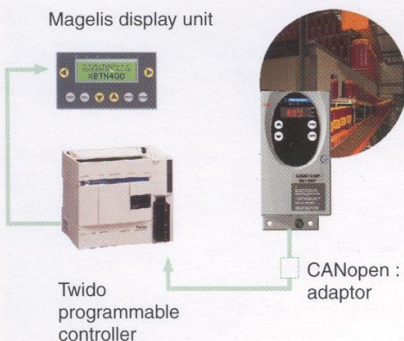
for your applications...

Packaging, Conveyors, mechanical handling etc.

- Flux vector control for excellent response
- 16 Preset speeds, Linear or s-ramps, Step by Step Jog
- Brake logic, Dynamic braking
- Integrated Modbus / CANopen communication for easy integration into automation systems.

Textile Machines

- Traverse function preset
- Multiple preset speeds, multiple assignment of logic inputs
- IP55 Drive made easy through customised enclosures, Kit type drives.



The inseparable...
 Altivar 31 and Twido on CANopen :
 the ideal solution for machine manufacturers...



With PC or Pocket PC, for use on site or in the office, etc.

Standards and certifications

CSA, EN 50178, EN 61800-3, EN 55011, EN 55022, class B et class A gr. 1C-TICK, NOM 117





For complex, high power machines...

AUTHORISED DEALER
TECHMECH ELECTRICALS
 1540 - A , BHAGIRATH PALACE
 DELHI - 110006
 TEL / FAX : 011 - 23865306 ,
 23873570
 email : techmechelec@yahoo.com

Drive Altivar 71

Make way for evolution!

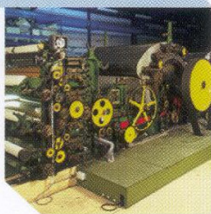


With its high performance speed regulation and ease of parametering, the **Altivar 71** is the reference up to 500 kW. Its access to all **industrial communication networks** and numerous **automation systems options** enables simple adaption to complex and advanced machines.



Applications from 0.37 to 500 KW

- Material Handling
- Hoisting
- Process Machine
- Wood Machine
- Textile
- Packaging Machine



Main characteristics

- Up to **220% overtorque** for the Altivar 71 constant torque offer.
- Flux vector control with or without sensor for asynchronous motors.
- On-line auto-tuning (FVC).
- Speed or torque control.
- Output frequency up to 1000Hz.
- Synchronous motor control without sensor.
- Immunity to supply voltage drops of **up to 50%**
- Protection against instillation "noise" by **integrated EMC Filters**.
- Operation **up to 50°C** without derating
- **Configurable** behavior on fault
- Alarm management
- Auto-adaption of **switching frequency**
- **High immunity** of the drive
- Protection of motor and of drive
- Dynamic braking (integrated transistor)
- Programmable Controller inside card for integration of program
- Graphic screen with **customisable display**
- Integrated Modbus and CANopen. Fipio, Ethernet, Modbus Plus, Profibus DP, Uni-Telway, INTERBUS also available
- **Interface cards for incremental encoder** RS422, open collector, Push Pull, for:
 - obtaining **full torque** even at 0 speed
 - increasing **speed and torque precision**
 - Increasing dynamic **performance**

Easy to control...

- Graphic screen with customisable display.
- Plain text with 6 available languages (English, Chinese, German, Spanish, French and Italian) with possibility of adding other languages.
- Navigation button for easily "surfing" through the menus.
- <Simply Start> menu for quick start-up and immediate benefit of the full performance of the Altivar 71.
- Function keys for short-cuts, on-line help or configurable for some applications.
- Continuous display of the operating parameters of the motor.



Voltage ranges

- 200-240 V single-phase,
- 200-240 V / 380...500 V 3-phase.
- 50/60 Hz.

Altivar 71 for your applications...

Material handling, lifting

- Assured performance :
 - exceptional overtorque :
 - 220% Tn for 2 seconds
 - Integrated brake sequence.
 - I/O. Update time : 2ms.

Production line

- Precision of control and adjustment
- Perfect integration in automation systems. access to all industrial communication networks.
- Ready-assembled IP54 version. closest possible mounting to the machine.



Graphical display of settings using PowerSuite.

Standards and certifications

UL, CSA, C-TICK



AUTHORISED DEALER

TECHMECH ELECTRICALS
1540 - A, BHAGIRATH PALACE, DELHI - 110006
TEL / FAX : 011 - 23865306, 23873570

email : techmechelec@yahoo.com

Drive Altivar 61

*Mastering elements
for more comfort & Energy saving*



With its dedicated functions for the circulation of fluids, the Altivar 61 offers suitable solutions for industrial and commercial building environments :
energy savings, communications network, remedies for installation pollution etc.



Applications from 0.75 to 630 KW

- Air conditioning and heating.
- Air treatment systems.
- Fans.
- Pumps.



Main characteristics

- Integrated anti-harmonic solutions.
- Remedies for installation pollution.
- IP54 product with EN 55011 class A or class B (IEC/EN 61800-3) integrated EMC filters.
- Pump and fan macro configurations.
- Zero flow detection, flow limitation.
- Sleep/wake function.
- Smoke extraction function.
- Underload and overload detection.
- PID regulator, PID references.
- Energy saving ratio, 2 pts/5 pts quadratic ratio.
- Alarm.
- Fault configuration.
- Integrated Modbus and CANopen. Ethernet TCP/IP, Fipio, Modbus Plus, INTERBUS, Profibus DP, Modbus/Uni-Telway, DeviceNet, LONWORKS, METASYS N2, APOGEE FLN, BACnet also available

Multipump: Water distribution

- With its programmable multipump card, the Altivar 61 provides flexibility, user-friendliness and adaptability for the management of several pumps.
- Monitoring & full control of the installation by switching and spreading the wear and tear between pumps
- Detection of absence of fluid...

Voltage ranges

- 380...460 V 3-phase
- 50/60 Hz

Altivar 61

for your applications...

Air conditioning and heating

- Adjustment of flow rates on the basis of actual need for better energy management: use of integrated PID regulator.
- Suppression of mechanical resonance with jump frequencies.
- Enhanced comfort with reduced noise pollution caused by fan operation : jump frequency, energy saving ratio, adjustment of switching frequency during operation, variable "white noise" frequency.

Air treatment clean rooms, water treatment

- Continuity of service assured in the event of loss of measuring signals : fallback position, automatic / manual operation.
- Remote monitoring of the installation with connection of drives to a communication network.



With PC or Pocket PC, for use on site or in the office, etc.

Standards and certifications
UL, CSA, C-TICK



LISTED 170M
IND.CONF.EC



N998



AUTHORISED DEALER

TECHMECH ELECTRICALS
1540 - A, BHAGIRATH PALACE, DELHI - 110006
TEL / FAX : 011 - 23865306, 23873570

email : techmechelec@yahoo.com

>>>...Stimulate your HVAC solutions

AUTHORISED DEALER

TECHMECH ELECTRICALS
1540 - A , BHAGIRATH PALACE , DELHI - 110006
TEL / FAX : 011 - 23865306 , 23873570

email : techmechelec@yahoo.com

Drive Altivar 21

A breath of fresh air for your HVAC applications!

↙ **Economical**, it is specially designed to optimise your needs. IP54 product with EN 55011 class A or B (IEC/EN 61800-3) **integrated EMC filters**.

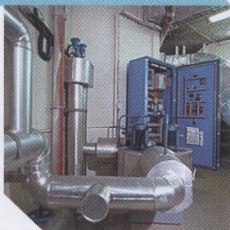
Simple "plug and drive" usage, the **Altivar 21** enables immediate start-up following its initial connection.

Compact, it easily integrates in your machines and can be mounted side by side.



Applications from 0.75 to 30 KW

- Ventilation
- Pumping
- Heating and
- Air conditioning



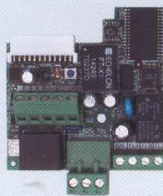
Main characteristics

- Functions for pumps and fans:
PI regulator.
catch on the fly.
jump frequencies.
- Factory set for immediate start-up.
- Simplified customisation of settings using built-in display or the Power Suite software.
- Integrated class A or B filter
- Harmonic less technology to avoid DC/AC chokes



The Altivar 21 simplifies integration in your building management systems:

- Its open cards enable you to connect to the main types of communication bus used in building management (LonWorks, BACnet, METASYS N2 and APOGEE FLN).
- Its design complies with international standards and certifications: CE, UL, CSA, C-TICK...



Voltage ranges

- 200...240 V 3 phase
- 380...460 V 3 phase
- 50/60 Hz

Altivar 21

for your applications...

Heating and air conditioning:

- Adjustment of flow rates on the basis of actual needs for better energy management, use of PID regulator.
- Suppression of mechanical resonance using jump frequencies and up 16 kHz switching frequency adjustable during operation.
- Reduction of consumption using energy saving and quadratic ratios.
- Installation monitoring: diagnostics, fault management, alarms.

Ventilation:

- Detection of fan belt breakage.
- Automatic restart, catch on the fly.
- Jump frequencies.

Pumping:

- Continuity of service assured in the event of loss of measuring signals:
Fallback position, automatic/manual operation.
- Safety and protection of pump:
Detection of current threshold.
Limitation of operating time at low speed.
PTC probe management.



- Its remote terminal increases user-friendliness:
Auto-tuning of functions
- downloading and saving of configurations.

Standards and certifications

CSA, EN 50178 / IEC 1800-3
EN 55011 class A-En 55022 class B
CE, UL, CSA, C - TICK



AUTHORISED DEALER

TECHMECH ELECTRICALS
1540 - A , BHAGIRATH PALACE , DELHI - 110006
TEL / FAX : 011 - 23865306 , 23873570

email : techmechelec@yahoo.com

>>>...choose the tailor-made

AUTHORISED DEALER

TECHMECH ELECTRICALS
1540 - A , BHAGIRATH PALACE , DELHI - 110006
TEL / FAX : 011 - 23865306 , 23873570

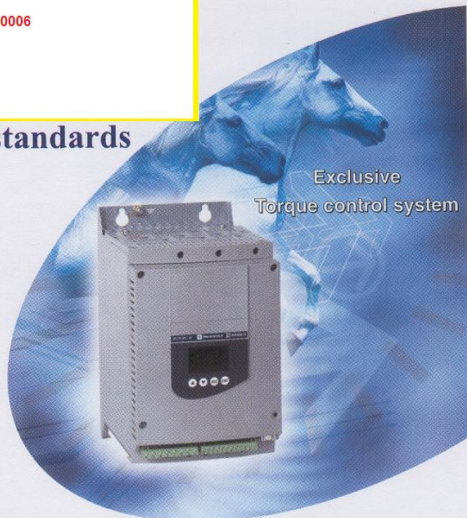
email : techmechelec@yahoo.com

Starter Altistart 48

Soft start-soft stop units.

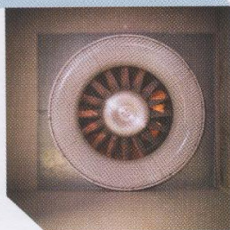
Setting new world standards

with its patented TCS torque control system, the Altistart 48 is the ideal solution for machines requiring perfectly controlled starting and stopping, particularly those for pumps and fans. It limits energy loss and reduces temperature rise. In addition, it very easily integrates in enclosures and automation systems.



Applications from 4 to 1200 KW

- Pumps.
- Fans and high inertia machines.
- Compressors.
- Conveyors.



Main characteristics

- Starting and stopping of the machines by the Altistart 48 **Torque control system** (TCS* patent)
- Thermal protection of the motor (all classes inbuilt)
- Protection of the machine : underload and overload with adjustable threshold and times, locked rotor, control of the direction of rotation.
- Factory set for immediate start-up.
- Simplified customisation of setting, using built-in display or the Power Suite software.
- Through connection
- Possibility to connect in line/phase
- **Control of starter bypass contactor with all protective functions maintained and no extra CT required.**
- Elimination of heat dissipation in enclosures.
- Dual configuration (2 motors)
- Numerous configurable inputs / outputs.
- Cascaded starting and deceleration of a number of motors.
- **Modbus integrated**, FIPIO, Profibus DP, DeviceNet, Ethernet.

TCS : Torque Control System.

Voltage ranges

- 230... 415 V
- 208...690 V
- 50/60 Hz upto 20% variation allowed. (suitable for generators)

Altivar 48

for your applications...

Pumps

- Suppression of pressure surges and valve surges.
- Protection against running dry, loss of inversion of phases and in the event of a locked rotor.
- Reduction of motor temperature rise: automatic changing of the motor to freewheel mode on stopping when the flow rate of the pump drops to a low level.

Fans and high inertia machines

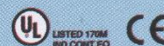
- Smooth starting, preventing stress on the drive chain and slipping of belts. Smoke extraction function.
- Limitation of current and voltage drops on starting.
- **Catching on the fly** of a fan rotating in reverse.
- Braking torque when stopping.



Settings simplified using the PowerSuite software.

Standards and certifications

UL / CSA / IEC 60947-4-2
CEM : classes A and B - DNV (Marine offshore)
C-TICK / GOST / CCIB / NOM.



AUTHORISED DEALER

TECHMECH ELECTRICALS
1540 - A , BHAGIRATH PALACE , DELHI - 110006
TEL / FAX : 011 - 23865306 , 23873570

email : techmechelec@yahoo.com

Selection guide

Drive Altivar 11

"E" version



Integrated EMC
class B filter

"A" version



Local controls
and NPN logic

"Version on baseplate
replace the letter H
by "P"

For simple machines

"E" version

Single-phase 200 V to 240 V

kW / HP	A	
0.18 / 0.25	1.1	ATV 11HU05M2E
0.37 / 0.50	2.1	ATV 11HU09M2E
0.55 / 0.75	3	ATV 11HU12M2E
0.75 / 1	3.6	ATV 11HU18M2E
1.5 / 2	6.8	ATV 11HU29M2E
2.2 / 3	9.6	ATV 11HU41M2E

AUTHORISED DEALER

TECHMECH ELECTRICALS
1540 - A, BHAGIRATH PALACE, DELHI - 110006
TEL / FAX : 011 - 23865306, 23873570

email : techmechelec@yahoo.com

"A" version

Single-phase 100 V to 120 V

kW / HP	A	
0.18/0.25	1.4	ATV 11HU05F1A
0.37/0.5	2.4	ATV 11HU09F1A*
0.75/1	4	ATV 11HU18F1A

Single-phase 200 V to 240 V

kW / HP	A	
0.18/0.25	1.4	ATV 11HU05M2A
0.37/0.5	2.4	ATV 11HU09M2A*
0.75/1	4	ATV 11HU18M2A*
1.5/2	7.5	ATV 11HU29M2A
2.2/3	10	ATV 11HU41M2A

3-phase 200 V to 230 V

		ATV 11HU05M3A
		ATV 11HU09M3A
		ATV 11HU18M3A*
		ATV 11HU29M3A*
		ATV 11HU41M3A

Drive Altivar 31

"E" version



with integrated
class "A" EMC filter

"A" version



with Local control,
add "A" at end of
reference

For "C" & "K" Version
refer detailed catalogue.
Also available 525V to 600V.

Single-phase 200 V to 240 V

kW/HP	A	
0.18/0.25	1.5	ATV31H018M2
0.37/0.5	3.3	ATV31H037M2
0.55/0.75	3.7	ATV31H055M2
0.75/1	4.8	ATV31H075M2
1.1/1.5	6.9	ATV31H011M2
1.5/2	8	ATV31H015M2
2.2/3	11	ATV31H022M2

3-phase 200 V to 230 V

kW/HP	A	
0.18/0.25	1.5	ATV31H018M3X
0.37/0.5	3.3	ATV31H037M3X
0.55/0.75	3.7	ATV31H055M3X
0.75/1	4.8	ATV31H075M3X
1.1/1.5	6.9	ATV31HU11M3X
1.5/2	8	ATV31HU15M3X
2.2/3	11	ATV31HU22M3X
3/	13.7	ATV31HU30M3X
4/5	17.5	ATV31HU40M3X
5.5/7.5	27.5	ATV31HU55M3X
7.5/10	33	ATV31HU75M3X
11/15	54	ATV31HD11M3X
15/20	66	ATV31HD15M3X

3-phase 380 V to 500 V

kW/HP	A	
0.37/0.5	1.5	ATV31H037N4
0.55/0.75	1.9	ATV31H055N4
0.75/1	2.3	ATV31H075N4
1.1/1.5	3	ATV31HU11N4
1.5/2	4.1	ATV31HU15N4
2.2/3	5.5	ATV31HU22N4
3/	7.1	ATV31HU30N4
4/5	9.5	ATV31HU40N4
5.5/7.5	14.3	ATV31HU55N4
7.5/10	17	ATV31HU75N4
11/15	27.7	ATV31HD11N4
15/20	33	ATV31HD15N4

Softstarter Altistart 01

3 phase 380 .. 415 V 50 / 60 Hz

3 phase 230 .. 690 V 50 / 60 Hz



KW / HP	A		3 phase 230 .. 690 V 50 / 60 Hz					
			"230 V KW / HP"	"400 V KW / HP"	"460 V HP"	"690 V KW"		
1.5 / 2.2 / 3	6	ATS01N206QN	7.5 / 10	15 / 15	20	30	32	ATS01N230LY
1	9	ATS01N209QN	11.0 / 15.0	22 / 25	30	37	44	ATS01N244LY
5.5	12	ATS01N212QN	18.5 / 25	37 / 40	50	55	72	ATS01N272LY
7.5 / 11	22	ATS01N222QN	22.0 / 30.0	45 / 50	60	75	85	ATS01N285LY
15	32	ATS01N232QN						

AUTHORISED DEALER

TECHMECH ELECTRICALS
1540 - A, BHAGIRATH PALACE, DELHI - 110006
TEL / FAX : 011 - 23865306, 23873570

email : techmechelec@yahoo.com

Selection guide

AUTHORISED DEALER

TECHMECH ELECTRICALS
1540 - A, BHAGIRATH PALACE, DELHI - 110006
TEL / FAX : 011 - 23865306 , 23873570

email : techmechelec@yahoo.com

Drive Altivar 71



For complex, high power machines

Single-phase 200 ... 240 V 50 / 60 Hz

3-phase 380... 500 v 50 / 60 Hz

3-phase 380... 500 V 50 / 60 Hz

Single-phase 200 ... 240 V 50 / 60 Hz			3-phase 380... 500 v 50 / 60 Hz			3-phase 380... 500 V 50 / 60 Hz		
kW / HP	A		kW / HP	A		kW / HP	A	
0.37 / 0.5	3	ATV 71HO75M3	0.75 / 1	2.3	ATV71HO75N4	75 / 100 / 160		ATV71HD75N4
0.71 / 1	4.8	ATV 71HU15M3	1.5 / 2	4.1	ATV71HU15N4	90 / 125 / 179		ATV71HD90N4
1.5 / 2	8	ATV 71HU22M3	2.2 / 3	5.8	ATV71HU22N4	110 / 150 / 215		ATV71HC11N4
2.2 / 3	11	ATV 71HU30M3	4.0 / 5.0	10.5	ATV71HU40N4	132 / 200 / 259		ATV71HC13N4
3	13.5	ATV 71HU40M3	5.5 / 7.5	14.3	ATV71HU55N4	160 / 250 / 314		ATV71HC16N4
4.0 / 5.0	17.5	ATV 71HU55M3	7.5 / 10	17.6	ATV71HU75N4	200 / 300 / 387		ATV71HC20N4
5.5 / 7.5	27.5	ATV 71HU75M3	11.0 / 15.0	27.7	ATV71HD11N4	220 / 350 / 427		ATV71HC25N4
			15.0 / 20.0	33	ATV71HD15N4	250 / 400 / 481		ATV71HC25N4
			18.5 / 20.0	41	ATV71HD18N4	280 / 450 / 550		ATV71HC28N4
			22 / 30	48	ATV71HD22N4	315 / 500 / 616		ATV71HC31N4
			30 / 40	66	ATV71HD30N4	315 / 671		ATV71HC40N4
			37 / 50	79	ATV71HD37N4	400 / 600 / 759		ATV71HC40N4
			45 / 60	94	ATV71HD45N4	500 / 700 / 941		ATV71HC50N4
			55 / 75	116	ATV71HD55N4			

Drive Altivar 61



For pumping and ventilation machines

3 Phase 380 .. 480 V 50/60 Hz

3 Phase 380 .. 480 V 50/60 Hz

3 Phase 380 .. 480 V 50/60 Hz			3 Phase 380 .. 480 V 50/60 Hz		
KW / HP	A		KW / HP	A	
0.75 / 1	3.7	ATV61H075N4	75.0 / 100.0	167	ATV61HD75N4
1.5 / 2	5.8	ATV61HU15N4	90.0 / 125.0	166	ATV61HD90N4
2.2 / 3	8.2	ATV61HU22N4	110.0 / 150.0	202	ATV61HC11N4
3	10.7	ATV61HU30N4	132.0 / 200.0	239	ATV61HC13N4
4.0 / 5.0	14.1	ATV61HU40N4	160.0 / 250.0	289	ATV61HC16N4
5.5 / 7.5	20.3	ATV61HU55N4	200.0 / 300.0	357	ATV61HC22N4
7.5 / 10	27	ATV61HU75N4	220.0 / 350.0	396	ATV61HC22N4
11.0 / 15.0	36.6	ATV61HD11N4	250.0 / 400.0	444	ATV61HC25N4
15.0 / 20.0	48	ATV61HD15N4	280.0 / 450.0	494	ATV61HC31N4
18.5 / 25.0	45.5	ATV61HD18N4	315.0 / 500.0	555	ATV61HC31N4
22.0 / 30.0	50	ATV61HD22N4	355	637	ATV61HC40N4
30.0 / 40.0	66	ATV61HD30N4	400.0 / 600.0	709	ATV61HC40N4
37.0 / 50.0	84	ATV61HD37N4	500.0 / 700.0	876	ATV61HC50N4
45.0 / 60.0	104	ATV61HD45N4	560.0 / 800.0	978	ATV61HC63N4
55.0 / 75.0	120	ATV61HD55N4	630.0 / 900.0	1091	ATV61HC63N4

Starter Altistart 48



3-phase 208 V to 690 V Standard class 10* applications

415 V		690 V		415		690 V	
KW		KW		KW		KW	A
7.5	ATV 48D17Q	15	ATS 48D17Y	17	90	ATS 48C17Q	170
11	ATV 48D22Q	18.5	ATS 48D22Y	22	110	ATS 48C21Q	210
15	ATV 48D32Q	22	ATS 48D32Y	32	132	ATS 48C25Q	250
18.5	ATV 48D38Q	30	ATS 48D38Y	38	160	ATS 48C32Q	320
22	ATV 48D47Q	37	ATS 48D47Y	47	220	ATS 48C41Q	410
30	ATV 48D62Q	45	ATS 48D62Y	62	250	ATS 48C48Q	480
37	ATV 48D75Q	45	ATS 48D75Y	75	315	ATS 48C59Q	590
45	ATV 48D88Q	75	ATS 48D88Y	88	355	ATS 48C66Q	660
55	ATV 48C11Q	90	ATS 48C11Y	110	400	ATS 48C79Q	790
75	ATS 48C14Q	110	ATS 48C14Y	140	500	ATS 48M10Q	1000
				630	ATS 48M12Q		

*Severe class 20 applications : starting time greater than 30 seconds. Upgrade the starter by 1 rating (example : 415 V 75 kW = ATS48 C32Q)

*"Q" range soft starters can also be connected in phase (6 wire). Please refer detailed catalogue for selection and circuit diagrams.