



## Product Overview

# **Bals GEE Norm**

For more than 60 years  
we define standards for the industry



Simply. Well. Connected.

**Simply. Well. Connected.**  
**Yesterday, today and in the future**



## About half a century competence and experience

Bals stands worldwide as a quality brand for innovation, reliability and service. For more than 60 years, we have been producing CEE plugs and connectors for the world markets. From day one we have focussed on the highest level of quality "Made in Germany". Our factories in Kirchhundem-Albaum and Freiwalde have highly skilled and motivated teams, the very latest manufacturing facilities



and a highly efficient logistics system.

Our product portfolio ranges from plugs, phase inverters, connectors, sockets outlets and combinations units to charging plugs and sockets for electrical vehicles. Numerous certifications from German and foreign certification institutes, as well as registered designs and patents, document the high technical standard of our products.

## Two modern factories a consistent quality standard

From the beginning the headquarters of our company is located in Kirchhundem-Albaum (North-Rhine-Westphalia). Product development, marketing and sales, as well as administration are located here. In addition, plug and socket systems and special products are manufactured in the Kirchhundem-Albaum factory. The factory in Freiwalde (Brandenburg), built in 1994 and expanded many times since, has state-of-the-art production facilities for fully-automatic manufacturing of unique CEE plugs and connectors as well as a highly-effective logistics centre for the manufacturing of unique CEE plugs and connectors as well as a highly-effective logistics centre.

## CEE plugs and connectors for the world market

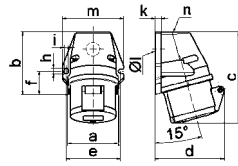
As an independent, medium-sized, family-owned company, we produce standardised industrial plugs and sockets acc. to IEC 60309 1-2 as well as plug and socket systems, distributors and components for the infrastructure of electrical vehicles. We set new technical standards with innovations and ground-breaking, partially patented new developments such as MULTI-GRIP or QUICK-CONNECT. The export rate in excess of 50 percent shows: Our solutions are highly valued around the world. Our products are sold in more than 80 countries. Subsidiaries and exclusive partners in strategically important countries only sell our products.

## Our responsibility to the highest quality

Quality does not permit any compromise. This has always been the maxim at Bals. The ISO-9001-certified production process in all factories ensures the well-known high product quality. This proof of quality is reflected in patents, certificates from German and foreign testing institutes, as well as the specification of Bals products by highly renowned companies. Innovation is an important quality benchmark for us. This way, we are always setting new standards with intelligent solutions that bring the user sustainable advantages.

**QUICK-CONNECT Surface Mounting Socket Outlet**

- Screwless terminals
- Kontex contact
- Protection degree IP44
- Cable entry 1x at top (open), 1x at bottom (closed)



A	16	16	16	32	32	32	A	P	V	Art. No.	Qty
P	3	4	5	3	4	5					
a	59,5	72,4	72,4	79,1	79,1	79,1	16	3	230	<b>11895</b>	10
b	90,0	90,0	90,0	92,0	92,0	92,0	16	4	400	<b>11905</b>	10
c	130,0	130,0	131,0	142,0	142,0	142,0	16	5	400	<b>112001</b>	10
d	85,0	96,0	98,0	103,0	103,0	106,0	16	5	400	<b>112001</b>	10
e	62,0	77,0	77,0	84,0	84,0	84,0	32	3	230	<b>11919</b>	10
f	33,5	33,5	33,5	30,0	30,0	30,0	32	4	400	<b>11922</b>	10
h	9,0	9,0	9,0	9,0	9,0	9,0	32	5	400	<b>112002</b>	10
i	5,5	5,5	5,5	5,5	5,5	5,5					
k	8,0	9,0	9,0	9,0	9,0	9,0					
ø l	21,0	21,0	21,0	21,0	21,0	21,0					
m	72,0	87,0	87,0	94,0	94,0	94,0					
n	M20	M25	M25	M25	M25	M25					

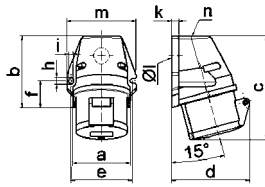
QUICK-CONNECT

112001

1 MB 19

**Surface Mounting Socket Outlet**

- Screw terminals
- Protection degree IP44
- Cable entry 1x at top (open), 1x at bottom (closed)



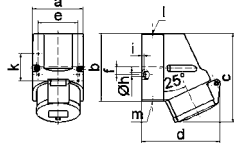
A	16	16	16	32	32	32	A	P	V	Art. No.	Qty
P	3	4	5	3	4	5					
a	59,5	72,4	72,4	79,1	79,1	79,1	16	3	230	<b>11765</b>	10
b	90,0	90,0	90,0	92,0	92,0	92,0	16	4	400	<b>11645</b>	10
c	130,0	130,0	131,0	142,0	142,0	142,0	16	5	400	<b>100</b>	10
d	85,0	96,0	98,0	103,0	103,0	106,0	16	5	400	<b>100</b>	10
e	62,0	77,0	77,0	84,0	84,0	84,0	32	3	230	<b>11651</b>	10
f	33,5	33,5	33,5	30,0	30,0	30,0	32	4	400	<b>11646</b>	10
h	9,0	9,0	9,0	9,0	9,0	9,0	32	5	400	<b>101</b>	10
i	5,5	5,5	5,5	5,5	5,5	5,5					
k	8,0	9,0	9,0	9,0	9,0	9,0					
ø l	21,0	21,0	21,0	21,0	21,0	21,0					
m	72,0	87,0	87,0	94,0	94,0	94,0					
n	M20	M25	M25	M25	M25	M25					

101

1 MB 19

**QUICK-CONNECT Surface Mounting Socket Outlet**

- Screwless terminals
- Kontex contact
- Protection degree IP44
- Cable entry 1x at top (open), 2x at bottom (closed)
- Base rotatable by 180°



A	16	16	16	32	32	32	A	P	V	Art. No.	Qty
P	3	4	5	3	4	5					
a	64,0	75,0	75,0	83,0	83,0	83,0	16	3	230	<b>11930</b>	10
b	87,0	100,0	100,0	126,0	126,0	126,0	16	4	400	<b>11907</b>	10
c	117,0	129,0	131,0	155,0	155,0	155,0	16	5	400	<b>11906</b>	10
d	103,0	108,0	116,0	130,0	130,0	136,0	16	5	400	<b>11906</b>	10
e	51,0	59,0	59,0	68,0	68,0	68,0	32	3	230	<b>11949</b>	10
f	-	11,0	11,0	11,0	11,0	11,0	32	4	400	<b>11956</b>	10
h	4,1	5,1	5,1	5,5	5,5	5,5	32	5	400	<b>11962</b>	10
i	4,5	4,5	4,5	6,5	6,5	6,5					
k	40,0	-	-	80,0	80,0	80,0					
l	M20	M20	M20	M25	M25	M25					
m	f. M20	f. M20	f. M20	2xM25	2xM25	2xM25					

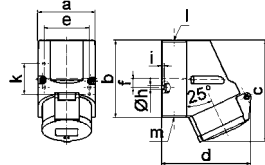
QUICK-CONNECT

11906

1 MB 7

**Surface Mounting Socket Outlet**

- Screw terminals
- Protection degree IP44
- Cable entry 1x at top (open), 2x at bottom (closed)
- Base rotatable by 180°



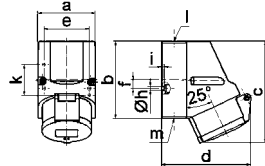
A	16	16	16	32	32	32	A	P	V	Art. No.	Qty
P	3	4	5	3	4	5					
a	64,0	75,0	75,0	83,0	83,0	83,0	16	3	230	<b>111</b>	10
b	87,0	100,0	100,0	126,0	126,0	126,0	16	4	400	<b>115</b>	10
c	117,0	129,0	131,0	155,0	155,0	155,0	16	5	400	<b>102</b>	10
d	103,0	108,0	116,0	130,0	130,0	136,0	16	5	400	<b>102</b>	10
e	51,0	59,0	59,0	68,0	68,0	68,0	32	3	230	<b>1114</b>	10
f	-	11,0	11,0	11,0	11,0	11,0	32	4	400	<b>1118</b>	10
h	4,1	5,1	5,1	5,5	5,5	5,5	32	5	400	<b>103</b>	10
i	4,5	4,5	4,5	6,5	6,5	6,5					
k	40,0	-	-	80,0	80,0	80,0					
l	M20	M20	M20	M25	M25	M25					
m	for M20	for M20	for M20	2xM25	2xM25	2xM25					

103

1 MB 7

**Surface Mounting Socket Outlet**

- Screw terminals
- Protection degree IP44
- Cable entry 1x at top (open), 2x at bottom (closed)
- Base rotatable by 180°



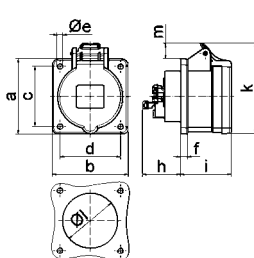
A	16	16	16	32	32	32	A	P	V	Art. No.	Qty
P	3	4	5	3	4	5					
a	64,0	75,0	75,0	83,0	83,0	83,0	16	3	230	<b>1133</b>	10
b	87,0	100,0	100,0	126,0	126,0	126,0	16	4	400	<b>1137</b>	10
c	117,0	129,0	131,0	155,0	155,0	155,0	16	5	400	<b>1143</b>	10
d	103,0	108,0	116,0	130,0	130,0	136,0	16	5	400	<b>1143</b>	10
e	51,0	59,0	59,0	68,0	68,0	68,0	32	3	230	<b>1145</b>	10
f	-	11,0	11,0	11,0	11,0	11,0	32	4	400	<b>1149</b>	10
h	4,1	5,1	5,1	5,5	5,5	5,5	32	5	400	<b>1155</b>	10
i	4,5	4,5	4,5	6,5	6,5	6,5					
k	40,0	-	-	80,0	80,0	80,0					
l	M20	M20	M20	M25	M25	M25					
m	for M20	for M20	for M20	2xM25	2xM25	2xM25					

1155

1 MB 7

**QUICK-CONNECT Panel Mounting Socket Outlet**

- Straight
- Screwless terminals
- Kontex contact
- Flange 75 x 75 mm
- Protection degree IP44



	A 16	16	16	32	32	32	A	P	V	Art. No.	Qty
	P 3	4	5	3	4	5					
a	75,0	75,0	75,0	75,0	75,0	75,0	16	3	230	<b>13686</b>	10
b	75,0	75,0	75,0	75,0	75,0	75,0	16	4	400	<b>13693</b>	10
c	60,0	60,0	60,0	60,0	60,0	60,0	16	5	400	<b>132001</b>	10
d	60,0	60,0	60,0	60,0	60,0	60,0	32	3	230	<b>13703</b>	10
Øe	5,5	5,5	5,5	5,5	5,5	5,5	32	4	400	<b>13710</b>	10
f	7,0	7,0	7,0	8,0	8,0	8,0	32	5	400	<b>132002</b>	10
h	35,5	35,5	35,5	50,0	50,0	50,0					
i	50,0	50,0	51,0	60,0	60,0	60,0					
k	74,0	84,0	91,0	94,0	94,0	102,0					
Øl	45,0	45,0	55,0	60,0	60,0	60,0					
m	8,0	12,0	16,0	17,0	17,0	22,0					

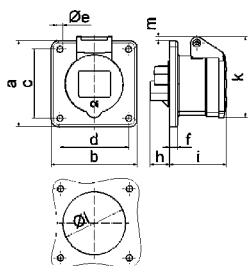
QUICK-CONNECT

132001

4 MB 263

**Panel Mounting Socket Outlet**

- Straight
- Screw terminals
- Flange 75 x 75 mm
- Protection degree IP44



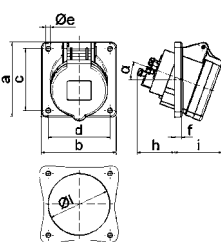
	A 16	16	16	32	32	32	A	P	V	Art. No.	Qty
	P 3	4	5	3	4	5					
a	75,0	75,0	75,0	75,0	75,0	75,0	16	3	230	<b>13001</b>	10
b	75,0	75,0	75,0	75,0	75,0	75,0	16	4	400	<b>1324</b>	10
c	60,0	60,0	60,0	60,0	60,0	60,0	16	5	400	<b>13005</b>	10
d	60,0	60,0	60,0	60,0	60,0	60,0	32	3	230	<b>13007</b>	10
Øe	5,5	5,5	5,5	5,5	5,5	5,5	32	4	400	<b>13011</b>	10
f	7,0	7,0	7,0	8,0	8,0	8,0	32	5	400	<b>1333</b>	10
h	17,0	26,0	17,0	36,0	36,0	19,0					
i	51,0	53,0	53,0	62,0	62,0	62,0					
k	70,0	80,0	85,0	90,0	90,0	98,0					
Øl	45,0	45,0	55,0	60,0	60,0	60,0					
m	3,5	7,0	11,5	12,0	12,0	17,0					

1333

4 MB 4

**QUICK-CONNECT Panel Mounting Socket Outlet**

- Angled 20°
- Screwless terminals
- Kontex contact
- Flange 85 x 85 mm
- Protection degree IP44



	A 16	16	16	32	32	32	A	P	V	Art. No.	Qty
	P 3	4	5	3	4	5					
a	85,0	85,0	85,0	85,0	85,0	85,0	16	3	230	<b>12749</b>	10
b	85,0	85,0	85,0	85,0	85,0	85,0	16	4	400	<b>12753</b>	10
c	70,0	70,0	70,0	70,0	70,0	70,0	16	5	400	<b>12757</b>	10
d	70,0	70,0	70,0	70,0	70,0	70,0	32	3	230	<b>12761</b>	10
Øe	5,5	5,5	5,5	5,5	5,5	5,5	32	4	400	<b>12764</b>	10
f	8,0	8,0	8,0	8,0	8,0	8,0	32	5	400	<b>12768</b>	10
h	46,0	46,0	46,0	61,0	61,0	61,0					
i	50,0	51,0	54,0	60,0	60,0	60,0					
Øl	57,0	65,0	70,0	78,0	78,0	78,0					
α	20°	20°	20°	20°	20°	20°					

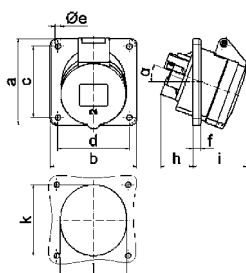
QUICK-CONNECT

12757

4 MB 264

**Panel Mounting Socket Outlet**

- Angled 20°
- Screw terminals
- Flange 85 x 85 mm
- Protection degree IP44



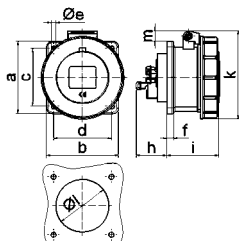
	A 16	16	16	32	32	32	A	P	V	Art. No.	Qty
	P 3	4	5	3	4	5					
a	85,0	85,0	85,0	85,0	85,0	85,0	16	3	230	<b>12080</b>	10
b	85,0	85,0	85,0	85,0	85,0	85,0	16	4	400	<b>12500</b>	10
c	70,0	70,0	70,0	70,0	70,0	70,0	16	5	400	<b>12078</b>	10
d	70,0	70,0	70,0	70,0	70,0	70,0	32	3	230	<b>12310</b>	10
Øe	5,5	5,5	5,5	5,5	5,5	5,5	32	4	400	<b>12311</b>	10
f	8,0	8,0	8,0	8,0	8,0	8,0	32	5	400	<b>1215</b>	10
h	30,0	30,0	30,0	50,0	50,0	50,0					
i	48,0	50,0	54,0	63,0	63,0	60,0					
k	57,0	65,0	70,0	78,0	78,0	78,0					
Øl	57,0	65,0	70,0	78,0	78,0	78,0					
α	20°	20°	20°	20°	20°	20°					

12078

4 MB 26

**QUICK-CONNECT Panel Mounting Socket Outlet**

- Straight
- Screwless terminals
- Kontex contact
- Flange 75 x 75 mm
- Protection degree IP67



	A 16	16	16	32	16	32	A	P	V	Art. No.	Qty
	P 3	4	5	3	4	5					
a	75,0	75,0	75,0	75,0	75,0	75,0	16	3	230	<b>13734</b>	10
b	75,0	75,0	75,0	75,0	75,0	75,0	16	4	400	<b>13739</b>	10
c	60,0	60,0	60,0	60,0	60,0	60,0	16	5	400	<b>13745</b>	10
d	60,0	60,0	60,0	60,0	60,0	60,0	32	3	230	<b>13750</b>	10
Øe	5,5	5,5	5,5	5,5	5,5	5,5	32	4	400	<b>13756</b>	10
f	7,0	7,0	7,0	8,0	8,0	8,0	32	5	400	<b>13762</b>	10
h	35,5	35,5	35,5	50,0	50,0	50,0					
i	57,0	58,0	57,0	65,0	65,0	65,0					
k	76,0	83,0	93,0	100,0	100,0	106,0					
Øl	45,0	45,0	55,0	60,0	60,0	60,0					
m	3,5	7,0	11,5	12,0	12,0	17,0					

QUICK-CONNECT

13745

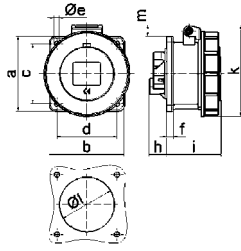
4 MB 105

**Panel Mounting Socket Outlet**

- Straight
- Screw terminals
- Flange 75 x 75 mm
- Protection degree IP67



1370



4 MB 5

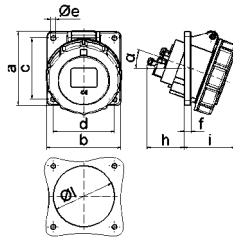
A	16	16	16	32	32	32	A	P	V	Art. No.	Qty
P	3	4	5	3	4	5					
a	75,0	75,0	75,0	75,0	75,0	75,0	16	3	230	<u>1372</u>	10
b	75,0	75,0	75,0	75,0	75,0	75,0					
c	60,0	60,0	60,0	60,0	60,0	60,0	16	4	400	<u>1376</u>	10
d	60,0	60,0	60,0	60,0	60,0	60,0					
e a	5,5	5,5	5,5	5,5	5,5	5,5	16	5	400	<u>1382</u>	10
f	7,0	7,0	7,0	8,0	8,0	8,0					
h	17,0	26,0	17,0	36,0	36,0	19,0	32	3	230	<u>13024</u>	10
i	57,0	58,0	57,0	65,0	65,0	65,0					
k	76,0	83,0	93,0	100,0	100,0	106,0	32	4	400	<u>13028</u>	10
l	45,0	45,0	55,0	60,0	60,0	60,0					
m	3,5	7,0	11,5	12,0	12,0	17,0	32	5	400	<u>1370</u>	10

**QUICK-CONNECT Panel Mounting Socket Outlet**

- Angled 20°
- Screwless terminals
- Kontex contact
- Flange 85 x 85 mm
- Protection degree IP67



12817



4 MB 114

A	16	16	16	32	32	32	A	P	V	Art. No.	Qty
P	3	4	5	3	4	5					
a	85,0	85,0	85,0	85,0	85,0	85,0	16	3	230	<u>12813</u>	10
b	85,0	85,0	85,0	85,0	85,0	85,0					
c	70,0	70,0	70,0	70,0	70,0	70,0	16	4	400	<u>12814</u>	10
d	70,0	70,0	70,0	70,0	70,0	70,0					
e a	5,5	5,5	5,5	5,5	5,5	5,5	16	5	400	<u>12817</u>	10
f	8,0	8,0	8,0	8,0	8,0	8,0					
h	46,0	46,0	46,0	61,0	61,0	61,0	32	3	230	<u>12819</u>	10
i	57,0	57,0	60,0	65,0	65,0	69,0					
l	57,0	65,0	70,0	78,0	78,0	78,0	32	4	400	<u>12821</u>	10
alpha	20°	20°	20°	20°	20°	20°					
							32	5	400	<u>12824</u>	10

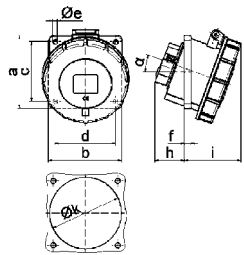
**QUICK-CONNECT**

**Panel Mounting Socket Outlet**

- Angled 20°
- Screw terminals
- Flange 85 x 85 mm
- Protection degree IP67



12084



4 MB 22

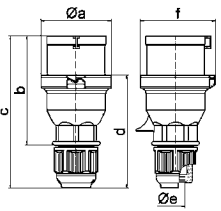
A	16	16	16	32	32	32	A	P	V	Art. No.	Qty
P	3	4	5	3	4	5					
a	85,0	85,0	85,0	85,0	85,0	85,0	16	3	230	<u>12231</u>	10
b	85,0	85,0	85,0	85,0	85,0	85,0					
c	70,0	70,0	70,0	70,0	70,0	70,0	16	4	400	<u>12502</u>	10
d	70,0	70,0	70,0	70,0	70,0	70,0					
e a	5,5	5,5	5,5	5,5	5,5	5,5	16	5	400	<u>12084</u>	10
f	8,0	8,0	8,0	8,0	8,0	8,0					
h	30,0	30,0	30,0	50,0	50,0	34,0	32	3	230	<u>12327</u>	10
i	55,0	57,0	59,0	67,0	67,0	69,0					
k	57,0	65,0	70,0	78,0	78,0	78,0	32	4	400	<u>12329</u>	10
l	57,0	65,0	70,0	78,0	78,0	78,0					
alpha	20°	20°	20°	20°	20°	20°	32	5	400	<u>1264</u>	10

**QUICK-CONNECT Plug with MULTI-GRIP**

- Screwless terminals
- Housing connection with thread and snap-in lock
- Cable gland Multi-Grip system
- Protection degree IP44



2136



2 MB 99

A	16	16	16	32	32	32	A	P	V	Art. No.	Qty
P	3	4	5	3	4	5					
a a	53,0	60,0	66,0	74,5	74,5	74,5	16	3	230	<u>210740</u>	10
b	93,5	100,5	103,0	121,0	121,0	121,5					
c	134,0	141,0	142,0	174,0	174,0	174,5	16	4	400	<u>210757</u>	10
d	97,5	104,5	105,5	128,0	128,0	128,5					
e	18,0	18,0	18,0	23,0	23,0	23,0	16	5	400	<u>210715</u>	10
f	57,5	64,5	70,5	78,0	78,0	80,0					
							32	3	230	<u>2138</u>	10
							32	4	400	<u>2142</u>	10
							32	5	400	<u>2148</u>	10

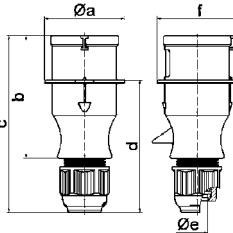
**QUICK-CONNECT MULTI-GRIP**

**TLS Plug with MULTI-GRIP**

- Screw terminals
- Cable gland Multi-Grip system
- One-piece housing
- Protection degree IP44



204-TLS



2 MB 129

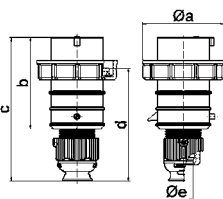
A	16	16	16	32	32	32	A	P	V	Art. No.	Qty
P	3	4	5	3	4	5					
a a	54,0	60,0	66,0	71,0	71,0	80,0	16	3	230	<u>21001-TLS</u>	10
b	94,5	98,0	101,0	115,0	115,0	119,0					
c	138,0	142,0	145,0	170,0	170,0	174,0	16	4	400	<u>21005-TLS</u>	10
d	101,5	105,5	108,5	124,0	124,0	128,0					
e a	18,0	18,0	18,0	23,0	23,0	23,0	16	5	400	<u>203-TLS</u>	10
f	56,6	64,0	71,0	76,0	76,0	85,0					
							32	3	230	<u>21013-TLS</u>	10
							32	4	400	<u>21017-TLS</u>	10
							32	5	400	<u>204-TLS</u>	10

**MULTI-GRIP**



### QUICK-CONNECT TE-Plus Plug with MULTI-GRIP

- Screwless terminals
- High temperature resistant contact carrier
- Nickel plated contacts
- Cable gland Multi-Grip system
- Protection degree IP67



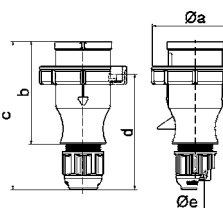
21241

2 MB 94

	A	16	16	16	32	32	32	A	P	V	Art. No.	Qty
	P	3	4	5	3	4	5					
Ø a		70,0	78,0	86,0	94,0	94,0	101,0	16	3	230	21238	10
b		95,0	95,0	97,0	118,0	118,0	117,0	16	4	400	21349	10
c		145,0	145,0	152,0	178,0	178,0	181,0	16	5	400	21239	10
d		111,0	111,0	119,0	136,0	136,0	138,5					
Ø e		18,0	18,0	21,0	23,0	23,0	27,0	32	3	230	21240	10
								32	4	400	21351	10
								32	5	400	21241	10

### TLS Plug with MULTI-GRIP

- Screw terminals
- Nickel plated contacts
- Cable gland Multi-Grip system
- One-piece housing
- Protection degree IP67



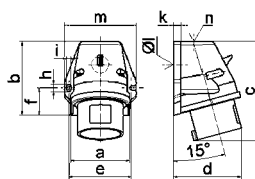
210589

2 MB 130

	A	16	16	16	32	32	32	A	P	V	Art. No.	Qty
	P	3	4	5	3	4	5					
a Ø		70,0	78,0	86,0	94,0	94,0	101,0	16	3	230	210576	10
b		94,5	98,0	101,0	115,0	115,0	119,0	16	4	400	210583	10
c		138,0	142,0	145,0	170,0	170,0	174,0	16	5	400	210589	10
d		105,5	109,5	112,5	128,0	128,0	132,0					
Ø e		18,0	18,0	18,0	23,0	23,0	23,0	32	3	230	210594	10
								32	4	400	210601	10
								32	5	400	210607	10

### QUICK-CONNECT Surface Mounting

- Appliance Inlet
- Screwless terminals
- Protection degree IP44
- Cable entry 1x at top (open), 1x at bottom (closed)



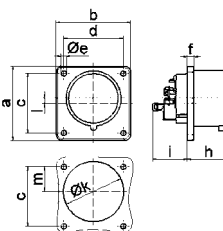
242001

5 MB 44

	A	16	16	16	32	32	32	A	P	V	Art. No.	Qty
	P	3	4	5	3	4	5					
a		59,5	72,4	72,4	79,1	79,1	79,1	16	3	230	24423	10
b		90,0	90,0	90,0	92,0	92,0	92,0	16	4	400	24392	10
c		120,0	120,0	122,0	134,0	134,0	134,0	16	5	400	242001	10
d		72,0	84,0	84,0	89,0	89,0	89,0					
e		62,0	77,0	77,0	84,0	84,0	84,0	32	3	230	24402	10
f		33,5	33,5	33,5	30,0	30,0	30,0	32	4	400	24405	10
h		9,0	9,0	9,0	9,0	9,0	9,0					
i		5,5	5,5	5,5	5,5	5,5	5,5					
k		8,0	9,0	9,0	9,0	9,0	9,0					
Ø l		21,0	21,0	21,0	21,0	21,0	21,0	32	5	400	242002	10
m		72,0	87,0	87,0	94,0	94,0	94,0					
n		M20	M25	M25	M25	M25	M25					

### QUICK-CONNECT Appliance Inlet with Flange

- Screwless terminals
- Flange 75 x 75 mm
- Protection degree IP44



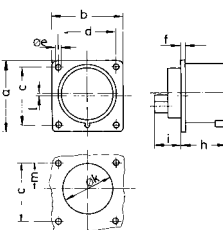
282002

5 MB 85

	A	16	16	16	32	32	32	A	P	V	Art. No.	Qty
	P	3	4	5	3	4	5					
a		75,0	75,0	75,0	75,0	75,0	75,0	16	3	230	28111	10
b		75,0	75,0	75,0	75,0	75,0	75,0	16	4	400	28112	10
c		60,0	60,0	60,0	60,0	60,0	60,0	16	5	400	282001	10
d		60,0	60,0	60,0	60,0	60,0	60,0					
Ø e		5,5	5,5	5,5	5,5	5,5	5,5	32	3	230	28010	10
f		7,0	7,0	7,0	7,0	7,0	7,0	32	4	400	28012	10
h		43,0	43,0	43,0	53,0	53,0	53,0					
i		39,0	39,0	39,0	50,0	50,0	50,0					
Ø k		42,0	48,0	61,0	57,0	57,0	60,0	32	5	400	282002	10
l		-	-	5,0	2,0	2,0	-					
m		30,0	30,0	25,0	28,0	28,0	30,0					

### Appliance Inlet with Flange

- Screw terminals
- Flange 75 x 75 mm
- Nickel plated contacts
- Protection degree IP44



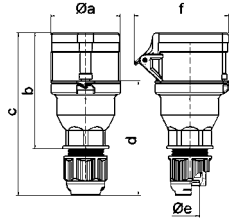
2815

5 MB 39

	A	16	16	16	32	32	32	A	P	V	Art. No.	Qty
	P	3	4	5	3	4	5					
a		75,0	75,0	75,0	75,0	75,0	75,0	16	3	230	2817	10
b		75,0	75,0	75,0	75,0	75,0	75,0	16	4	400	2831	10
c		60,0	60,0	60,0	60,0	60,0	60,0	16	5	400	2814	10
d		60,0	60,0	60,0	60,0	60,0	60,0					
Ø e		5,5	5,5	5,5	5,5	5,5	5,5	32	3	230	2827	10
f		7,0	7,0	7,0	7,0	7,0	7,0	32	4	400	2830	10
h		43,0	43,0	43,0	53,0	53,0	53,0					
i		24,0	24,0	24,0	30,0	30,0	30,0					
Ø k		42,0	48,0	61,0	57,0	57,0	57,0	32	5	400	2815	10
l		-	-	5,0	2,0	2,0	-					
m		30,0	30,0	25,0	28,0	28,0	30,0					

**QUICK-CONNECT Connector with MULTI-GRIP**

- Screwless terminals
- Housing connection with thread and snap-in lock
- Cable gland Multi-Grip system
- Kontex contact
- Protection degree IP44



3148

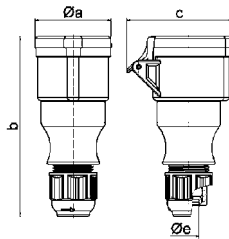
	A	16	16	16	32	32	32
P	3	4	5	3	4	5	
Ø a	53,0	60,0	66,0	74,5	74,5	74,5	
b	100,5	112,5	113,5	133,5	133,5	134,5	
c	141,0	153,0	154,0	186,0	186,0	187,0	
d	97,5	104,5	105,5	127,5	127,5	128,5	
Ø e	18,0	18,0	18,0	23,0	23,0	23,0	
f	76,0	79,0	86,0	92,0	92,0	97,0	

A	P	V	Art. No.	Qty
16	3	230	<b>3126</b>	10
16	4	400	<b>3130</b>	10
16	5	400	<b>3136</b>	10
32	3	230	<b>3138</b>	10
32	4	400	<b>3142</b>	10
32	5	400	<b>3148</b>	10

**QUICK-CONNECT MULTI-GRIP**

**TLS Connector with MULTI-GRIP**

- Screw terminals
- Cable gland Multi-Grip system
- One-piece housing
- Protection degree IP44



304-TLS

	A	16	16	16	32	32	32
P	3	4	5	3	4	5	
a	51,0	58,0	65,0	67,0	67,0	73,0	
b	145,0	148,0	156,0	185,0	185,0	185,0	
c	74,0	84,0	90,0	94,0	94,0	102,0	
Ø e	18,0	18,0	18,0	23,0	23,0	23,0	

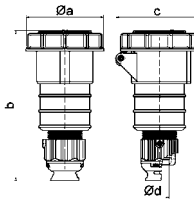
A	P	V	Art. No.	Qty
16	3	230	<b>31001-TLS</b>	10
16	4	400	<b>31005-TLS</b>	10
16	5	400	<b>303-TLS</b>	10
32	3	230	<b>31013-TLS</b>	10
32	4	400	<b>31017-TLS</b>	10
32	5	400	<b>304-TLS</b>	10

**MULTI-GRIP**

3 MB 82

**QUICK-CONNECT TE-Plus Connector with MULTI-GRIP**

- Screwless terminals
- High temperature resistant contact carrier
- Nickel plated contacts
- Cable gland Multi-Grip system
- Kontex contact
- Protection degree IP67



31243

	A	16	16	16	32	32	32
P	3	4	5	3	4	5	
Ø a	70,5	78,0	86,5	94,0	94,0	101,5	
b	161,0	161,0	168,0	196,0	196,0	200,0	
c	77,0	83,0	93,0	99,0	99,0	107,0	
Ø d	18,0	18,0	21,0	23,0	23,0	27,0	

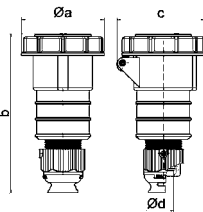
A	P	V	Art. No.	Qty
16	3	230	<b>31240</b>	10
16	4	400	<b>31241</b>	10
16	5	400	<b>31243</b>	10
32	3	230	<b>31244</b>	10
32	4	400	<b>31245</b>	10
32	5	400	<b>31247</b>	10

**QUICK-CONNECT MULTI-GRIP**

3 MB 63

**TLS Connector with MULTI-GRIP**

- Screw terminals
- Nickel plated contacts
- Cable gland Multi-Grip system
- One-piece housing
- Protection degree IP67



310346

	A	16	16	16	32	32	32
P	3	4	5	3	4	5	
Ø a	70,5	78,0	86,5	94,0	94,0	101,5	
b	154,0	155,0	160,0	190,0	190,0	190,0	
c	77,0	83,0	93,0	99,0	107,0	107,0	
Ø e	18,0	18,0	18,0	23,0	23,0	23,0	

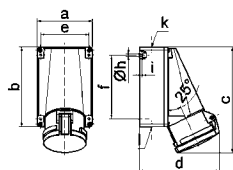
A	P	V	Art. No.	Qty
16	3	230	<b>310333</b>	10
16	4	400	<b>310340</b>	10
16	5	400	<b>310346</b>	10
32	3	230	<b>310351</b>	10
32	4	400	<b>310358</b>	10
32	5	400	<b>310364</b>	10

**QUICK-CONNECT MULTI-GRIP**

3 MB 81

**Surface Mounting Socket Outlet**

- Screw or screwless terminals
- Nickel plated contacts
- Kontex Plus with box terminals
- Without pilot-contact, with pilot-contact add „P“ to the art. no.
- Protection degree IP44



110383

1 MB 4

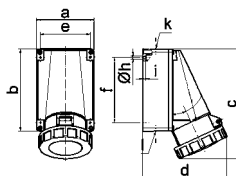
A	63	63	Execution	A	P	V	Art. No.	Qty
	QC	Screw						
a	118,0	118,0	QUICK-CONNECT	63	4	400	<b>110415</b>	5
b	170,0	170,0						
c	223,0	223,0	QUICK-CONNECT	63	5	400	<b>110383</b>	5
d	168,0	168,0						
e	104,0	104,0	Screw	63	3	230	<b>1104</b>	5
f	136,0	136,0						
Ø h	6,1	6,1	Screw	63	4	400	<b>1127</b>	5
i	6,0	6,0						
k	M40	M40	Screw	63	5	400	<b>1124</b>	5
l	M32/32	M32/32						

### Surface Mounting Socket Outlet

- Screw or screwless terminals
- Nickel plated contacts
- Without pilot-contact, with pilot-contact add „P“ to the art.no.
- Protection degree IP67



110413



1 MB 3/20

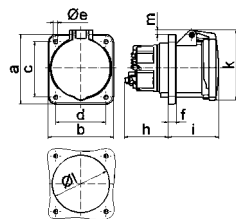
A	63	125	Execution	A	P	V	Art. No.	Qty
a	118,0	160,0	quick3 CONNECT	63	4	400	110416	5
b	170,0	260,0	quick3 CONNECT	63	5	400	110413	5
c	228,0	330,0	Screw	63	3	230	1157	5
d	176,0	168,0	Screw	63	4	400	1161	5
e	104,0	140,0	Screw	63	5	400	1112	5
f	136,0	240,0	Screw	125	3	230	11437	5
g h	6,1	8,3	Screw	125	4	400	11441	5
i	6,0	10,0	Screw	125	5	400	11447	5
k	M40	M50						
l	M32/32	-						

### Panel Mounting Socket Outlet

- Straight
- Screw or screwless terminals
- High temperature resistant contact carrier
- Flange 107 x 100 mm
- Without pilot-contact, with pilot-contact add „P“ to the art. no.
- Protection degree IP44



130114



4 MB 265/8

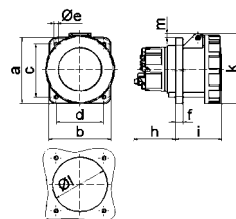
A	63	63	Execution	A	P	V	Art. No.	Qty
	QC	Screw						
a	107,0	107,0	quick3 CONNECT	63	4	400	130130	5
b	100,0	100,0	quick3 CONNECT	63	5	400	130114	5
c	85,0	85,0	Screw	63	3	230	1307	5
d	77,0	77,0	Screw	63	4	400	134	5
e e	6,5	6,5	Screw	63	5	400	136	5
f	12,0	12,0						
h	67,0	56,5						
i	77,0	77,0						
k	110,0	110,0						
l	88,0	88,0						
m	7,0	7,0						

### Panel Mounting Socket Outlet

- Straight
- Screw or screwless terminals
- High temperature resistant contact carrier
- Flange 107 x 100 mm (at 63A)
- Flange 120 x 120 mm (at 125A)
- Without pilot-contact, with pilot-contact add „P“ to the art. no.
- Protection degree IP67



130119



4 MB 267/55

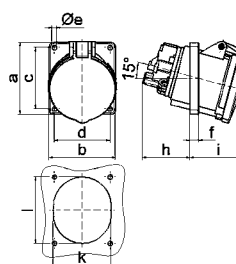
A	63	63	125	Execution	A	P	V	Art. No.	Qty
	QC	Screw							
a	107,0	107,0	120,0	quick3 CONNECT	63	4	400	130131	5
b	100,0	100,0	120,0	quick3 CONNECT	63	5	400	130119	5
c	85,0	85,0	100,0	Screw	63	3	230	1396	5
d	77,0	77,0	100,0	Screw	63	4	400	13100	5
e e	6,5	6,5	6,5	Screw	63	5	400	13104	5
f	12,0	12,0	21,0	Screw	125	3	230	13452	5
h	67,0	56,5	50,0	Screw	125	4	400	13447	5
i	76,0	76,0	117,0	Screw	125	5	400	13451	5
k	113,0	113,0	129,0						
l	88,0	88,0	104,0						
m	7,0	7,0	6,0						

### Panel Mounting Socket Outlet

- Angled
- Screw or screwless terminals
- High temperature resistant contact carrier
- Flange 100 x 92 mm
- Without pilot-contact, with pilot-contact add „P“ to the art. no.
- Protection degree IP44



120273



4 MB 64

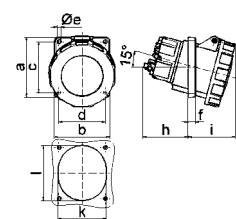
A	63	63	63	Execution	A	P	V	Art. No.	Qty
	P	3	4	5					
a	100,0	100,0	100,0	quick3 CONNECT	63	5	400	120273	5
b	92,0	92,0	92,0	Screw	63	3	230	12563	10
c	85,0	85,0	85,0	Screw	63	4	400	12074	10
d	77,0	77,0	77,0	Screw	63	5	400	12567	10
e e	6,5	6,5	6,5						
f	12,0	12,0	12,0						
h	65,0	65,0	65,0						
i	81,0	81,0	81,0						
k	80,0	80,0	80,0						
l	92,0	92,0	92,0						

### Panel Mounting Socket Outlet

- Angled
- Screw or screwless terminals
- High temperature resistant contact carrier
- Flange 100 x 92 mm (at 63A)
- Flange 114 x 114 mm (at 125A)
- Without pilot-contact, with pilot-contact add „P“ to the art. no.
- Protection degree IP67



120274

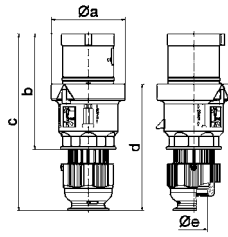


4 MB 268/65/9

A	63	63	125	Execution	A	P	V	Art. No.	Qty
	QC	Screw							
a	100,0	100,0	114,0	quick3 CONNECT	63	4	400	120320	5
b	92,0	92,0	114,0	quick3 CONNECT	63	5	400	120274	5
c	85,0	85,0	90,0	Screw	63	3	230	12569	5
d	77,0	77,0	90,0	Screw	63	4	400	12570	5
e e	6,5	6,5	6,5	Screw	63	5	400	12574	5
f	12,0	12,0	12,0	Screw	125	3	230	12100	5
h	74,0	65,0	82,0	Screw	125	4	400	12104	5
i	80,0	80,0	90,0	Screw	125	5	400	12108	5
k	80,0	80,0	92,0						
l	92,0	92,0	105,0						

**TE Plug with MULTI-GRIP**

- Screw or screwless terminals
- Nickel plated contacts
- Cable gland Multi-Grip system
- Housing connection with thread and snap-in lock
- Protection degree IP44



MULTI-GRIP

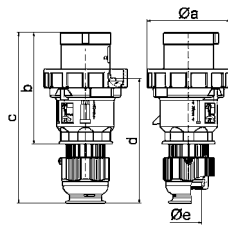
210765

2 MB 158

A	63	Execution	A	P	V	Art. No.	Qty
p							
ø a	96,0	QUICKCONNECT	63	4	400	<u>210761</u>	5
b	153,0						
c	233,0	QUICKCONNECT	63	5	400	<u>210765</u>	5
d	167,0						
ø e	36,0	Screw	63	3	230	<u>2104</u>	5
		Screw	63	4	400	<u>2151</u>	5
		Screw	63	5	400	<u>2155</u>	5

**TE Plug with MULTI-GRIP**

- Screw or screwless terminals
- High temperature resistant contact carrier
- Nickel plated contacts
- Cable gland Multi-Grip system
- Housing connection with thread and snap-in lock
- Protection degree IP67



MULTI-GRIP

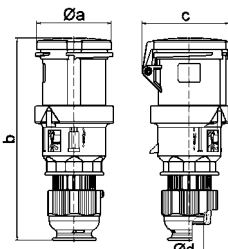
210766

2 MB 159/214

A	63	125	Execution	A	P	V	Art. No.	Qty
p								
ø a	113,5	126,0	QUICKCONNECT	63	4	400	<u>210762</u>	5
b	153,0	181,0	QUICKCONNECT	63	5	400	<u>210766</u>	5
c	233,0	282,0						
d	171,0	206,0	Screw	63	3	230	<u>2181</u>	5
ø e	36,0	50,0	Screw	63	4	400	<u>2185</u>	5
			Screw	63	5	400	<u>2189</u>	5
			Screw	125	3	230	<u>2191</u>	5
			Screw	125	4	400	<u>2195</u>	5
			Screw	125	5	400	<u>2199</u>	5

**Connector with MULTI-GRIP**

- Screw or screwless terminals
- Nickel plated contacts
- Cable gland Multi-Grip system
- Housing connection with thread and snap-in lock
- Without pilot-contact, with pilot-contact add „P“ to the art. no.
- Protection degree IP44



MULTI-GRIP

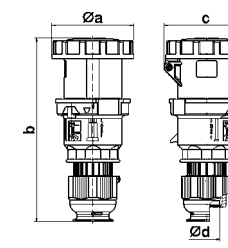
310494

3 MB 107

A	63	Execution	A	P	V	Art. No.	Qty
p							
ø a	95,0	QUICKCONNECT	63	4	400	<u>310490</u>	5
b	251,0						
c	109,0	QUICKCONNECT	63	5	400	<u>310494</u>	5
ø d	36,0	Screw	63	3	230	<u>3104</u>	5
		Screw	63	4	400	<u>3151</u>	5
		Screw	63	5	400	<u>3112</u>	5

**TE Connector with MULTI-GRIP**

- Screw or screwless terminals
- High temperature resistant contact carrier
- Nickel plated contacts
- Cable gland Multi-Grip system
- Housing connection with thread and snap-in lock
- Without pilot-contact, with pilot-contact add „P“ to the art. no.
- Protection degree IP67



MULTI-GRIP

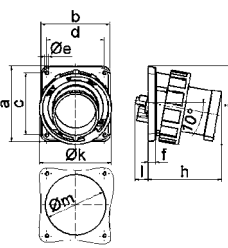
310495

3 MB 109/131

A	63	125	Execution	A	P	V	Art. No.	Qty
p								
ø a	110,0	125,0	QUICKCONNECT	63	4	400	<u>310491</u>	5
b	251,0	300,0	QUICKCONNECT	63	5	400	<u>310495</u>	5
c	113,0	128,0						
ø d	36,0	50,0	Screw	63	3	230	<u>3181</u>	5
			Screw	63	4	400	<u>3185</u>	5
			Screw	63	5	400	<u>3124</u>	5
			Screw	125	3	230	<u>3191</u>	5
			Screw	125	4	400	<u>3195</u>	5
			Screw	125	5	400	<u>3199</u>	5

**Panel Mounting Appliance Inlet**

- Screw terminals
- High temperature resistant contact carrier
- Nickel plated contacts
- Box terminals
- Flange 107 x 100 mm (63A)
- Flange 130 x 120 mm (125A)
- Protection degree IP67



2744

5 MB 56/ 22

A	63	125	A	P	V	Art. No.	Qty
p	3/4/5	3/4/5					
a	107,0	130,0	63	3	230	<u>27007</u>	5
b	100,0	120,0					
c	85,0	108,0	63	4	400	<u>27011</u>	5
d	77,0	100,0					
e ø	6,5	6,5	63	5	400	<u>27017</u>	5
f	12,0	13,0					
h	155,0	130,0	125	3	230	<u>2736</u>	5
i	118,0	135,0					
k	113,5	126,0	125	4	400	<u>2740</u>	5
l	-	23,0					
m ø	-	105,0	125	5	400	<u>2744</u>	5

**Surface Mounting Socket Outlet**

- Switched/ interlocked
- Nickel plated contacts
- With mech. double interlocking
- In 0-position lockable (with padlock)
- Protection degree IP44

Ampere	Pole	Voltage	Art. No.	Quantity
16	3	230	<u>1619</u>	1
16	4	400	<u>16038</u>	1
16	5	400	<u>16039</u>	1
32	4	400	<u>16042</u>	1
32	5	400	<u>16043</u>	1
63	4	400	<u>16605</u>	1
63	5	400	<u>16603</u>	1



16603

**Surface Mounting Socket Outlet**

- Switched/ interlocked
- Nickel plated contacts
- With mech. double interlocking
- In 0-position lockable (with padlock)
- Protection degree IP67

Ampere	Pole	Voltage	Art. No.	Quantity
16	3	230	<u>160048</u>	1
16	4	400	<u>16040</u>	1
16	5	400	<u>16041</u>	1
32	4	400	<u>160178</u>	1
32	5	400	<u>160177</u>	1
63	4	400	<u>16604</u>	1
63	5	400	<u>16602</u>	1



16602

**Surface Mounting Socket Outlet**

- Switched/ interlocked/ fused
- In 0-position lockable (with padlock)
- Nickel plated contacts
- With C-type MCB and RCCB 40/0.03A for 16A and 32A
- With D02 and RCCB 63/0.03A for 63A
- Protection degree IP44

Ampere	Pole	Voltage	Art. No.	Quantity
16	4	400	<u>17323</u>	1
16	5	400	<u>17343</u>	1
32	4	400	<u>17325</u>	1
32	5	400	<u>17344</u>	1
63	4	400	<u>17536</u>	1
63	5	400	<u>17537</u>	1



17537

**Surface Mounting Socket Outlet**

- Switched/ interlocked/ fused
- In 0-position lockable (with padlock)
- Nickel plated contacts
- With C-type MCB and RCCB 40/0.03A for 16A and 32A
- With D02 and RCCB 63/0.03A for 63A
- Protection degree IP67

Ampere	Pole	Voltage	Art. No.	Quantity
16	4	400	<u>17329</u>	1
16	5	400	<u>17345</u>	1
32	4	400	<u>17331</u>	1
32	5	400	<u>17346</u>	1
63	4	400	<u>17553</u>	1
63	5	400	<u>17554</u>	1



17554

**Surface Mounting Socket Outlet**

- Screw terminals
- Nickel plated contacts
- Cable entry one at top (open) and two at bottom (closed)
- Base rotatable by 180°
- Protection degree IP44

Ampere	Pole	Voltage	Art. No.	Quantity
16	2	24	<u>410</u>	
16	3	24	<u>416</u>	
16	2	42	<u>411</u>	
16	3	42	<u>417</u>	
32	2	24	<u>4111</u>	
32	3	24	<u>4117</u>	
32	2	42	<u>4112</u>	
32	3	42	<u>4118</u>	



410

**Panel Mounting Socket Outlet**

- Straight
- Screw terminals
- Nickel plated contacts
- Flange 75 x 75 mm
- Protection degree IP44

Ampere	Pole	Voltage	Art. No.	Quantity
16	2	24	<u>4354</u>	
16	3	24	<u>4360</u>	
16	2	42	<u>4355</u>	
16	3	42	<u>4361</u>	
32	2	24	<u>4365</u>	
32	3	24	<u>4371</u>	
32	2	42	<u>4366</u>	
32	3	42	<u>4372</u>	



4372

**Plug**

- Screw terminals
- Nickel plated contacts
- Cable gland Multi-Grip system
- Protection degree IP44

**MULTI-GRIP**

Ampere	Pole	Voltage	Art. No.	Quantity
16	2	24	<u>4422</u>	
16	3	24	<u>4428</u>	
16	2	42	<u>4423</u>	
16	3	42	<u>4429</u>	
32	2	24	<u>4433</u>	
32	3	24	<u>4439</u>	
32	2	42	<u>4434</u>	
32	3	42	<u>4440</u>	



4422

**Connector**

- Screw terminals
- Nickel plated contacts
- Cable gland Multi-Grip system
- Protection degree IP44

**MULTI-GRIP**

Ampere	Pole	Voltage	Art. No.	Quantity
16	2	24	<u>4522</u>	
16	3	24	<u>4528</u>	
16	2	42	<u>4523</u>	
16	3	42	<u>4529</u>	
32	2	24	<u>4533</u>	
32	3	24	<u>4539</u>	
32	2	42	<u>4534</u>	
32	3	42	<u>4540</u>	



4529

**QUICK-CONNECT Phase Inverter with MULTI-GRIP**

- Screwless terminals
- Nickel plated contacts
- Cable gland Multi-Grip system
- Housing connection with thread and snap-in lock
- Protection degree IP44



Ampere	Pole	Voltage	Art. No.	Quantity
16	4	400	<u>22053</u>	10
16	5	400	<u>225</u>	10
32	4	400	<u>22055</u>	10
32	5	400	<u>227</u>	10



227

**Phase Inverter with MULTI-GRIP**

- Screw terminals
- High temperature resistant contact carrier
- Nickel plated contacts
- Cable gland Multi-Grip system
- Protection degree IP44



Ampere	Pole	Voltage	Art. No.	Quantity
16	5	230	<u>2286</u>	10
16	5	400	<u>2271</u>	10
32	5	230	<u>2287</u>	10
32	5	400	<u>2288</u>	10



2288

**Phase Inverter with MULTI-GRIP**

- Screw terminals
- High temperature resistant contact carrier
- Nickel plated contacts
- Cable gland Multi-Grip system
- Protection degree IP67



Ampere	Pole	Voltage	Art. No.	Quantity
16	5	230	<u>2266</u>	10
16	5	400	<u>2251</u>	10
32	5	230	<u>2267</u>	10
32	5	400	<u>2252</u>	10



2251

**Phase Inverter - Surface Mounting Appliance Inlet**

- Screw terminals
- High temperature resistant contact carrier
- Nickel plated contacts
- Protection degree IP44

Ampere	Pole	Voltage	Art. No.	Quantity
16	5	230	<u>24208</u>	10
16	5	400	<u>24209</u>	10
32	5	230	<u>24210</u>	10
32	5	400	<u>24211</u>	10



24209

**Surface Mounting Socket Outlet 7-pole**

- Screw terminals
- High temperature resistant contact carrier
- Nickel plated contacts
- Cable entry 1 x at top (opened), 2 x at bottom (closed)
- Base rotatable by 180°
- Protection degree IP44

Ampere	Pole	Voltage	Art. No.	Quantity
16	7	230	<u>11480</u>	10
16	7	400	<u>11481</u>	10
32	7	230	<u>11482</u>	10
32	7	400	<u>11483</u>	10



11483

**Panel Mounting Socket Outlet 7-pole**

- Straight
- Screw terminals
- High temperature resistant contact carrier
- Nickel plated contacts
- Flange 75 x 75 mm
- Drill holes 60 x 60 mm
- Protection degree IP44

Ampere	Pole	Voltage	Art. No.	Quantity
16	7	230	<u>13326</u>	10
16	7	400	<u>13327</u>	10
32	7	230	<u>13328</u>	10
32	7	400	<u>13329</u>	10



13329

**Plug 7-pole with MULTI-GRIP**

- Screw terminals
- High temperature resistant contact carrier
- Nickel plated contacts
- Cable gland Multi-Grip system
- Protection degree IP44



Ampere	Pole	Voltage	Art. No.	Quantity
16	7	230	<u>210550</u>	10
16	7	400	<u>21557</u>	10
32	7	230	<u>210636</u>	10
32	7	400	<u>210067</u>	10



210067

**Connector 7-pole with MULTI-GRIP**

- Screw terminals
- High temperature resistant contact carrier
- Nickel plated contacts
- Cable gland Multi-Grip system
- Protection degree IP44



Ampere	Pole	Voltage	Art. No.	Quantity
16	7	230	<u>310311</u>	10
16	7	400	<u>31752</u>	10
32	7	230	<u>310381</u>	10
32	7	400	<u>310123</u>	10



310123

### Domestic Panel Mounting

#### Socket Outlet

- Screw terminals
- Hinged lid and injected flange gasket (E,F)
- Nickel plated contacts (E, F, K)
- Protection degree IP54

Earthing Type Country - System	Colour	Art. No.	Qty
Germany F	blue	71094	10
Germany F	grey	71095	10
Belgium/France E	blue	7139	10
Belgium/France E	grey	7142	10
Denmark K	blue	71071	
UK G	blue	71142	



### Domestic Panel Mounting

#### Socket Outlet

- Screwless terminals
- Hinged lid and injected flange gasket
- Nickel plated contacts
- Protection degree IP54

#### QUICKCONNECT

Earthing Type Country - System	Colour	Art. No.	Qty
Germany F	blue	71099	10
Germany F	grey	71100	10
Belgium/France E	blue	71118	10
Belgium/France E	grey	71119	10



### Domestic Panel Mounting

#### Socket Outlet

- Screw terminals
- Protection degree IP68
- Nickel plated contacts

Earthing Type Country - System	Colour	Art. No.	Qty
Germany F	blue	7112	10
Germany F	grey	7119	10
Belgium/France E	blue	7153	10
Belgium/France E	grey	71028	10



7112

### Domestic Interlocked Mounting

#### Socket Outlet

- Switched and electrical interlocked
- Protection degree IP67
- Nickel plated contacts

Earthing Type Country - System	Colour	Art. No.	Qty
Germany F	blue	76100	1



### Domestic Plug

- Cable gland Multi-Grip system
- Spacious connection area
- Double earthing system (E/F)
- Protection degree IP44
- Nickel plated contacts

#### MULTI-GRIP

Earthing Type Country - System	Colour	Art. No.	Qty
Germany F	blue	7370	20
Belgium/France E			
Germany F	grey	7371	20
Belgium/France E			
Germany F	black	7372	20
Belgium/France E			
Germany F	red	7373	20
Belgium/France E			



7370

### Domestic Plug

- Closure cap
- Nickel plated contacts
- With cable gland
- Double earthing system (E/F)
- Protection degree IP68

Earthing Type Country - System	Colour	Art. No.	Qty
Germany F	blue	736	10
Belgium/France E			
Germany F	grey	737	10
Belgium/France E			



736

### Domestic Connector

- Cable gland Multi-Grip system
- Spacious connection area
- Optional child protection
- Protection degree IP54
- Nickel plated contacts

#### MULTI-GRIP

Earthing Type Country - System	Colour	Art. No.	Qty
Germany F	blue	7486	20
Germany F	grey	7487	20
Germany F	black	7488	20
Germany F	red	7489	20
Belgium/France E	blue	7490	20
Belgium/France E	grey	7491	20
Belgium/France E	black	7492	20
Belgium/France E	red	7493	20



7486

### Domestic Connector

- Nickel plated contacts
- With cable gland
- Protection degree IP68

Earthing Type Country - System	Colour	Art. No.	Qty
Germany F	blue	746	10
Germany F	grey	747	10
Belgium/France E	blue	7416	10
Belgium/France E	grey	7455	10



746

**TE Panel Mounting Socket Outlet**

- Straight
- High temperature resistant contact carrier
- Nickel plated contacts
- Protection degree IP67



Execution	A	P	V	h	Art. No.
Screw terminal	32	4	400	3	<b>13021</b>
<b>QUICK-CONNECT</b>	32	4	400	3	<b>130156</b>

**QUICK-CONNECT Surface Mounting Socket Outlet**

- Screwless terminals
- High temperature resistant contact carrier
- Nickel plated contacts
- Protection degree IP67



Execution	A	P	V	h	Art. No.
Screwless terminal	32	4	400	3	<b>11556</b>

**TE Surface Mounting Socket Outlet**

- Switched
- With mech. double interlocking
- High temperature resistant contact carrier
- Nickel plated contacts
- Protection degree IP67



A	P	V	h	Art. No.
32	4	400	3	<b>16050</b>

**TE Surface Mounting Socket Outlet**

- Switched
- With mech. double interlocking
- High temperature resistant contact carrier
- Nickel plated contacts
- Protection degree IP67



A	P	V	h	Art. No.
32	4	400	3	<b>17026</b>

**Plug with MULTI-GRIP**

- Nickel plated contacts
- Cable gland Multi-Grip system
- One-piece housing
- Protection degree IP67



Execution	A	P	V	h	Art. No.
Screw terminal	32	4	400	3	<b>210824</b>
<b>QUICK-CONNECT</b>	32	4	400	3	<b>21232-TLQ</b>

21232-TLQ

**Connector with MULTI-GRIP**

- Nickel plated contacts
- Cable gland Multi-Grip system
- One-piece housing
- Protection degree IP67



Execution	A	P	V	h	Art. No.
Screw terminal	32	4	400	3	<b>310567</b>
<b>QUICK-CONNECT</b>	32	4	400	3	<b>31186-TLQ</b>

310567

Order no. **896459**

**Components:**

1 CEE socket 32A, 400V, 4p, 3h, IP67 nickel plated contacts, with mechanical interlocking, lockable in 0-position

**Fuse:**

1 C-type MCB 32A, 3p  
 1 RCCB 40/0.03A, 4p

**Cable entry at top and bottom:**

each with 1x M12, 1x M20, 2x M40

**Connection option:**

2 cables up to 5 x 25 mm<sup>2</sup>

**VARIABOX-M**  
 IP67 - 260 x 230 mm



Order no. **896462**

**Components:**

2 CEE socket 32A, 400V, 4p, 3h, IP67 nickel plated contacts, with mechanical interlocking, lockable in 0-position

**Fuse:**

2 C-type MCB 32A, 3p  
 1 RCCB 63/0.03A, 4p

**Cable entry at top and bottom:**

each with 1x M12, 1x M20, 2x M40

**Connection option:**

2 cables up to 5 x 25 mm<sup>2</sup>

**VARIABOX-L**  
 IP67 - 390 x 230 mm





Technical Informations

- Housing material: high quality plastic
- Wired ready for connection

**TK-Kombi-Socket**

- With terminals and wiring (ready for installation)
- With integrated domestic socket outlet 16A 230V ~ (type F - Germany)
- Protection degree IP44

A	P	V	Execution	Art.-No.
16	5	400		<b>1010</b>
16	5	400	with fuse holder 5 x 20 mm - DIN 41671	<b>109</b>
32	5	400	with fuse holder 5 x 20 mm - DIN 41671	<b>1011</b>
16	5	400	with twin terminal and <b>QUICKCONNECT</b>	<b>1010-CC</b>



1010

Order no. **89004**

- Components:**  
2 domestic sockets 16A, 230V ~ (type F - Germany)  
1 CEE socket 16A, 400V, 5p

**Cable entry at top and bottom:**  
each with 1x M12, 1x M20, 2x M25

**Connection option:**  
1 cable up to 5 x 6 mm<sup>2</sup>

**VARIABOX-S**

IP44 - 130 x 230 mm



Order no. **89010**

- Components:**  
2 domestic sockets 16A, 230V ~ (type F - Germany)  
1 CEE socket 16A, 400V, 5p

- Fuse:**  
2 C-type MCBs 16A, 1p  
1 C-type MCB 16A, 3p  
1 RCCB 40/0.03A, 4p

**Cable entry at top and bottom:**  
each with 1x M12, 1x M20, 2x M40

**Connection option:**  
2 cables up to 5 x 25 mm<sup>2</sup>

**VARIABOX-M**

IP44 - 260 x 230 mm



Order no. **89076**

- Components:**  
2 domestic sockets 16A, 230V ~ (type F - Germany)  
1 CEE socket 16A, 400V, 5p  
1 CEE socket 32A, 400V, 5p

- Fuse:**  
2 C-type MCBs 16A, 1p  
1 C-type MCB 16A, 3p  
1 C-type MCB 32A, 3p  
1 RCCB 40/0.03A, 4p

**Cable entry at top and bottom:**  
each with 1x M12, 1x M20, 2x M40

**Connection option:**  
2 cables up to 5 x 25 mm<sup>2</sup>

**VARIABOX-L**

IP44 - 390 x 230 mm



Order no. **89095**

- Components:**  
2 domestic sockets 16A, 230V ~ (type F - Germany)  
1 CEE socket 16A, 400V, 5p  
1 CEE socket 32A, 400V, 5p  
1 CEE socket 63A, 400V, 5p

- Fuse:**  
2 C-type MCBs 16A, 1p  
1 C-type MCB 16A, 3p  
1 C-type MCB 32A, 3p  
1 RCCB 63/0.03A, 4p

**Cable entry at top and bottom:**  
each with 1x M12, 1x M20, 2x M40

**Connection option:**  
cables up to 5 x 25 mm<sup>2</sup>

**VARIABOX-XL**

IP44 - 520 x 230 mm



Order no. **89987**

- Components:**  
10 domestic sockets 16A, 230V ~ (type F - Germany)  
1 CEE socket 16A, 400V, 5p  
1 CEE socket 32A, 400V, 5p

- Fuse:**  
10 C-type MCBs 16A, 1p  
1 C-type MCB 16A, 3p  
1 C-type MCB 32A, 3p  
1 RCCB 63/0.03A, 4p

**Cable entry at top and bottom:**  
each with 1x M12, 1x M20, 2x M40

**Connection option:**  
2 cables up to 5 x 25 mm<sup>2</sup>

**VARIABOX-L DUO**

IP44 - 390 x 460 mm



Order no. **890929**

- Components:**  
2 domestic sockets 16A, 230V ~ IP67 - (type F - Germany)  
1 CEE socket 16A, 400V, 5p, IP67  
1 CEE socket 32A, 400V, 5p, IP67

- Fuse:**  
2 C-type MCBs 16A, 1p  
1 C-type MCB 16A, 3p  
1 C-type MCB 32A, 3p  
1 RCCB 40/0.03A, 4p

**Cable entry at top and bottom:**  
each with 1x M12, 1x M20, 2x M40

**Connection option:**  
2 cables up to 5 x 25 mm<sup>2</sup>

**VARIABOX-XL**

IP67 - 520 x 230 mm



Order no. **896378**

- Components:**  
1 CEE socket 16A, 400V, 5p, IP44 nickel plated contacts, with mechanical interlocking, lockable in 0-position  
1 CEE socket 32A, 400V, 5p, IP44 nickel plated contacts, with mechanical interlocking, lockable in 0-position

- Fuse:**  
1 C-type MCB 16A, 3p  
1 C-type MCB 32A, 3p  
1 RCCB 40/0.03A, 4p

**Cable entry at top and bottom:**  
each with 1x M12, 1x M20, 2x M40

**Connection option:**  
2 cables up to 5 x 25 mm<sup>2</sup>

**VARIABOX-L**

IP44 - 390 x 230 mm



Order no. **5401884**

**Components:**

6 domestic sockets 16A, 230V ~  
(type F - Germany)

**Fuse:**

6 C-type MCBs 16A, 1p  
1 RCCB 40/0.03A, 4p

**Cable entry at top and bottom:**

each with 2x M40

**Connection option:**

2 cables up to 5 x 25 mm<sup>2</sup>

**MODBOX**<sup>®</sup>-Midi

384 x 255 mm, rubber



Order no. **5401274**

**Components:**

2 domestic sockets 16A, 230V ~  
(type F - Germany)  
1 CEE socket 16A, 400V, 5p  
1 CEE socket 32A, 400V, 5p

**Fuse:**

2 C-type MCBs 16A, 1p  
1 C-type MCB 16A, 3p  
1 C-type MCB 32A, 3p  
1 RCCB 63/0.03A, 4p

**Cable entry at top and bottom:**

each with 2x M40

**Connection option:**

2 cables up to 5 x 25 mm<sup>2</sup>

**MODBOX**<sup>®</sup>

420 x 300 mm, rubber



Order no. **522590**

**Components:**

6 domestic sockets 16A, 230V ~  
(type F - Germany)  
2 CEE sockets 16A, 400V, 5p  
1 CEE socket 32A, 400V, 5p  
1 rotary field measuring device

**Fuse:**

3 C-type MCBs 16A, 1p  
1 C-type MCB 16A, 3p  
1 RCCB 40/0.03A, 4p

**Cable entry/inlet:**

CEE phase inverter 32A, 400V, 5p

**Mobile combination unit**

250 x 210 mm - portable, rubber



Order no. **5202245**

**Components:**

4 domestic sockets 16A, 230V ~  
(type F - Germany)  
2 CEE sockets 16A, 400V, 5p  
2 CEE sockets 32A, 400V, 5p

**Fuse:**

2 C-type MCBs 16A, 1p  
2 C-type MCBs 16A, 3p  
2 C-type MCBs 32A, 3p  
1 RCCB 63/0.03A, 4p

**Cable entry/inlet:**

CEE plug 63A, 400V, 5p with  
cable 3 m H07RN-F5G10

**Mobile combination unit**

320 x 245 mm - portable, rubber



Order no. **57148**

**Components:**

2 domestic sockets 16A, 230V ~  
(type F - Germany)  
2 CEE sockets 16A, 400V, 5p

**Cable entry/inlet:**

CEE plug 16A, 400V, 5p with  
cable 2 m H07RN-F5G2,5

**Uni-Block**

140 x 140 mm - portable, rubber



Order no. **57076**

**Components:**

3 domestic sockets 16A, 230V ~  
(type F - Germany)  
1 CEE socket 16A, 400V, 5p

**Cable entry:**

1x M25

**Connection option:**

1 cable up to 5 x 10 mm<sup>2</sup>

**Uni-Block**

140 x 140 mm - hanging, rubber



Order no. **530003**

**Components:**

2 domestic sockets 16A, 230V ~  
(type F - Germany)  
1 CEE socket 16A, 400V, 5p

**Fuse:**

2 C-type MCBs 16A, 1p  
1 RCCB 40/0.03A, 4p

**Cable entry/inlet:**

CEE plug 16A, 400V, 5p with  
cable 2 m H07RN-F5G2,5

**Mobile combination unit**

365 x 120 mm, portable, rubber



Order no. **546**

**Components:**

3 CEE socket 16A, 400V, 5p

**Cable entry/inlet:**

CEE inlet 16A, 400V, 5p

**Hanging distributor unit**

118 x 118 mm - hanging, plastic



## Technical Informations

- Housing material: hard polyethylene
- Wired ready for connection

Order no. **5202999****Components:**

6 domestic sockets 16A, 230V ~, IP54 (type F - Germany)  
2 CEE socket 16A, 400V, 5p, IP54

**Fuse:**

6 C-type MCBs 16A, 1p  
1 C-type MCB 16A, 3p  
1 RCCB 40/0.03A, 4p

**Additional components:**

1 Phasesignal, LED grün  
1 Earthbolt, outside

**Cable entry/inlet:**

1 CEE inlet 16A, 400V, 5p



340 x 400 x 350 mm

Order no. **5203000****Components:**

9 domestic sockets 16A, 230V ~, IP54 (type F - Germany)  
3 CEE socket 16A, 400V, 5p, IP54  
1 CEE socket 32A, 400V, 5p, IP54

**Fuse:**

9 C-type MCBs 16A, 1p  
3 C-type MCBs 16A, 3p  
1 RCCB 40/0.03A, 4p

**Additional components:**

1 Phasesignal, LED grün  
1 Earthbolt, outside

**Cable entry/inlet:**

1 CEE inlet 32A, 400V, 5p



340 x 560 x 350 mm

Order no. **5203001****Components:**

9 domestic sockets 16A, 230V ~, IP54 (type F - Germany)  
4 CEE socket 16A, 400V, 5p, IP54  
2 CEE socket 32A, 400V, 5p, IP54  
1 CEE socket 63A, 400V, 5p, IP54

**Fuse:**

9 C-type MCBs 16A, 1p  
2 C-type MCBs 32A, 3p  
4 C-type MCBs 16A, 3p  
3 RCCB 63/0.03A, 4p

**Additional components:**

1 Phasesignal, LED grün  
1 Earthbolt, outside

**Cable entry/inlet:**

1 CEE inlet 63A, 400V, 5p



545 x 600 x 400 mm

Order no. **5203002****Components:**

9 domestic sockets 16A, 230V ~, IP54 (type F - Germany)  
4 CEE socket 16A, 400V, 5p, IP54  
4 CEE socket 32A, 400V, 5p, IP54  
2 CEE socket 63A, 400V, 5p, IP54  
1 CEE socket 125A, 400V, 5p, IP54

**Fuse:**

9 C-type MCBs 16A, 1p  
4 C-type MCBs 32A, 3p  
4 C-type MCBs 16A, 3p  
2 C-type MCBs 63A, 3p  
4 RCCB 63/0.03A, 4p  
2 RCCB 63/0.5A, 4p

**Additional components:**

1 Phasesignal, LED green  
1 Earthbolt, outside

**Cable entry/inlet:**

1 CEE inlet 125A, 400V, 5p



700 x 600 x 400 mm



made  
in  
Germany



Simply. Well. Connected.

Bals Elektrotechnik GmbH & Co. KG  
D-57399 Kirchhundem-Albaum  
Phone: +49 27 23/771-0  
Fax: +49 27 23/771-177/178  
E-mail: [info@bals.com](mailto:info@bals.com)  
Internet: [www.bals.com](http://www.bals.com)

Subject to technical modifications and typographical errors